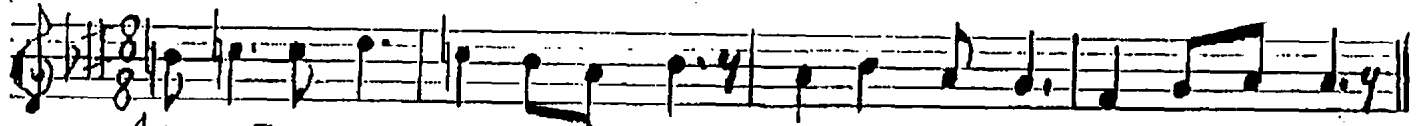


Düyek

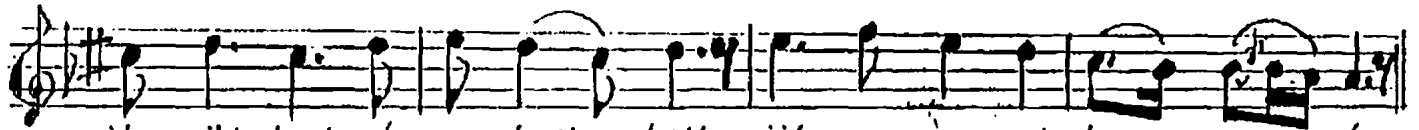
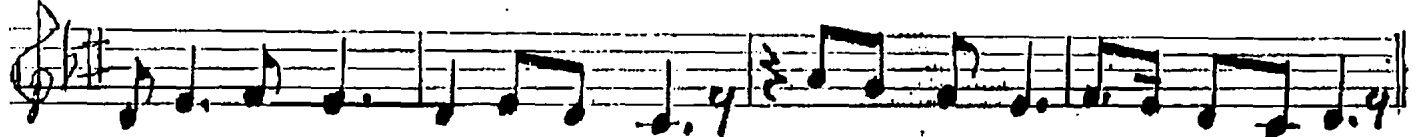
SULTANI YEGAH ŞARKI. Güfte: DR. Galip UZUNCA

SAÇIMA KARIAR DOLDU , Beste: Mümin SALMAN

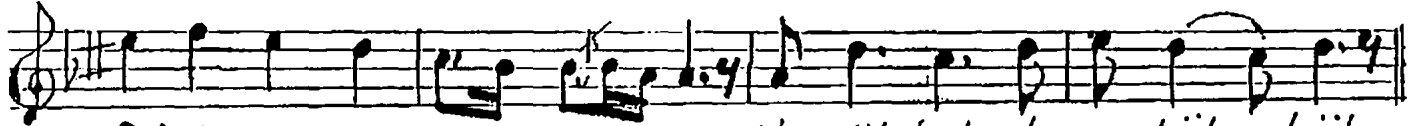
♩ = 168



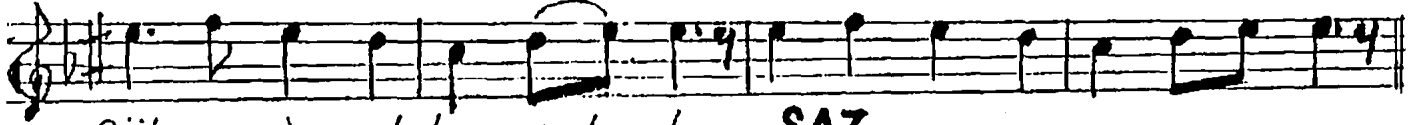
Aranâğme



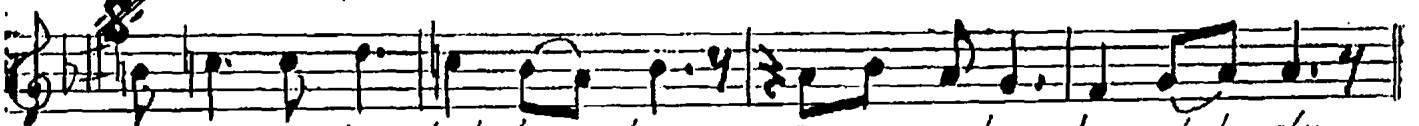
Ne gül kal dı ne bül bül gül şe. nim çok tan sol du



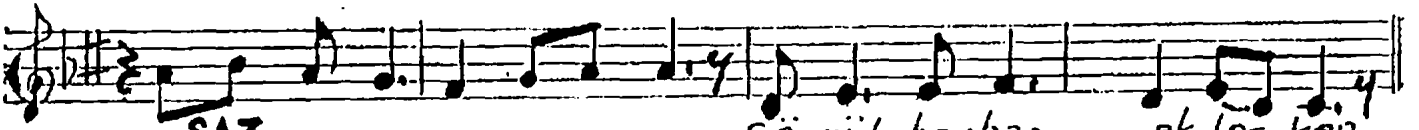
SAZ Ne gül kal dı ne bül bül



Gül şe nim çok tan sol du SAZ



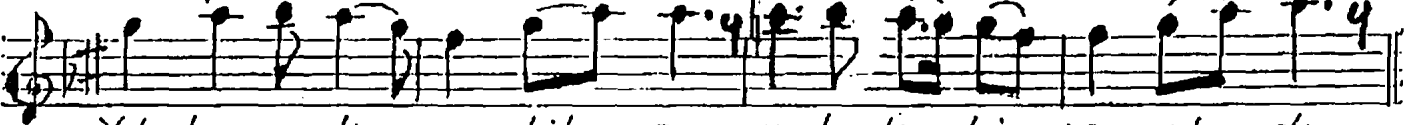
Gö nül ba har bek ler ken Saçı ma kar lar dol du



SAZ Gö nül ba har ek ler ken



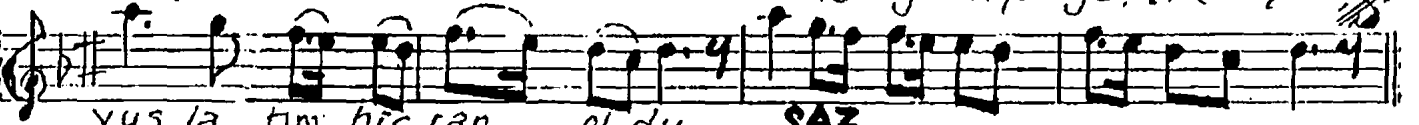
Sa çı ma kar lar dol du SAZ



Yıl lar ge lip geç tik çe vus la tım hic rân ol du



SAZ Yıl lar ge lip geç tik çe



vus la, tım hic rân ol du SAZ

Ne gül kal dı ne bül bül gül şerim çok tan soldu
Gönül bahar beklerken saçıma karlar doldu
Yıllar gelip geçtikçe vuslatım hicrân oldu
Gönül bahar beklerken saçıma karlar doldu