

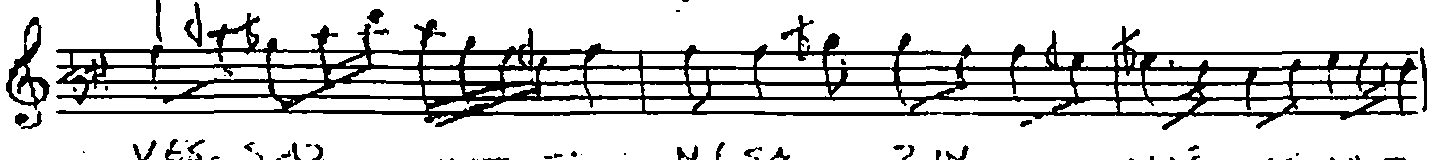
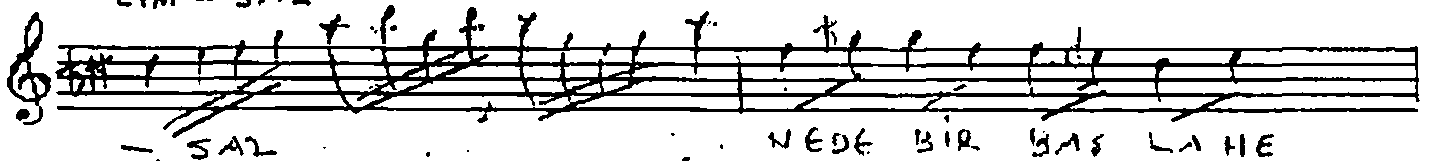
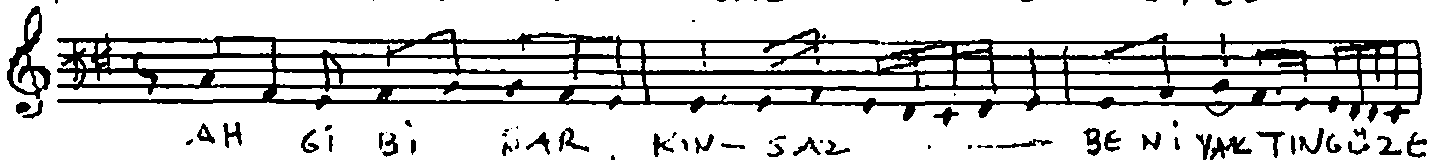
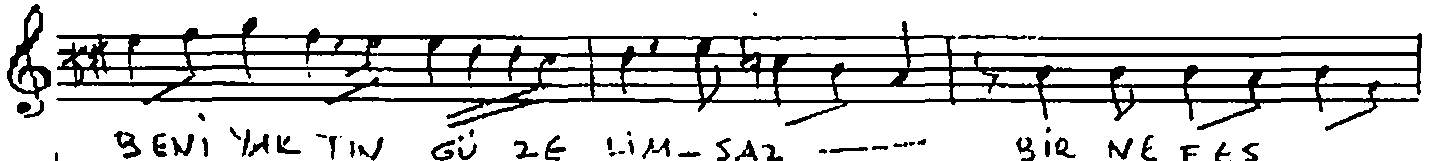
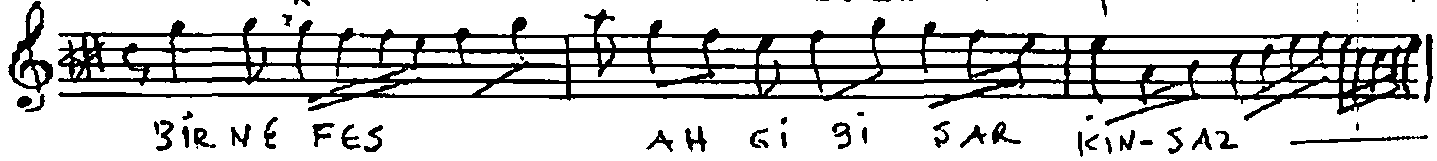
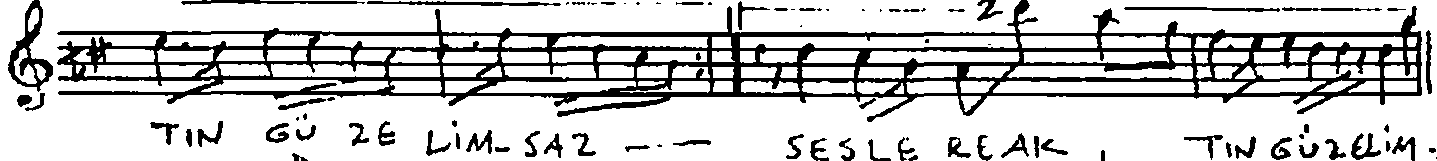
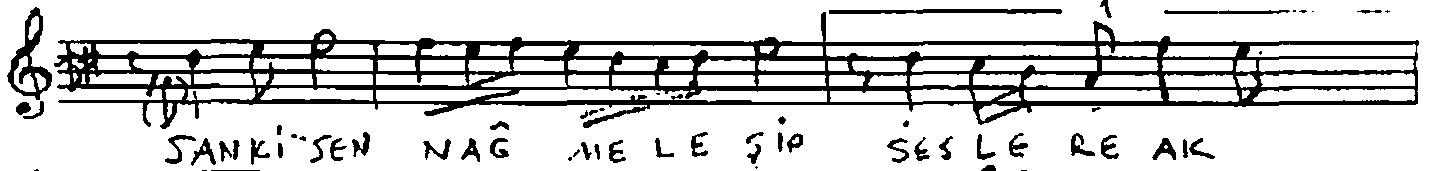
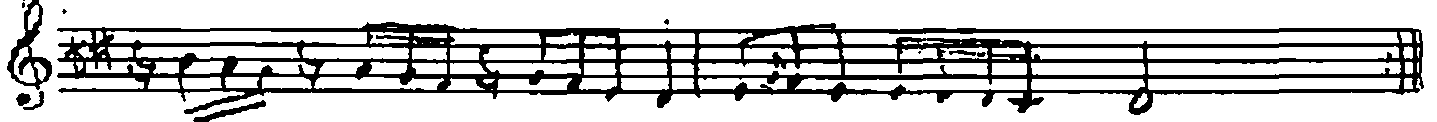
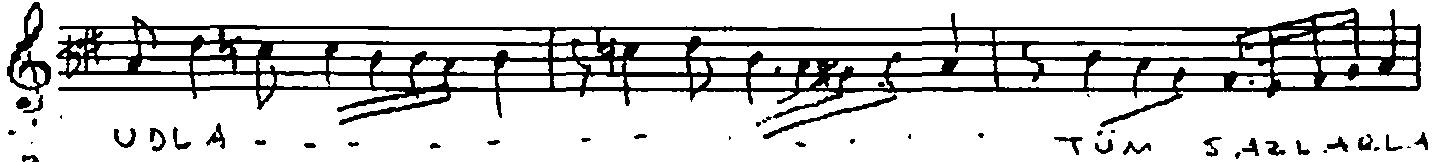
# SULTANİ YERANİ FARKI

SANKİ SEN NÂĞİELİŞİP.

BES: CELÂL-ABA.  
GÜR: G. FAHRİ TULİ

DÜYEK

ARAYÂĞİME



- SAZ - - - - - NEDE BİR BAŞ LA HE VES - SAZ - - - - -  
 - BANA DER MAM Dİ YE - SAZ - - - - - HİC RA  
 MİBİ LAK TIN GÜ Z E LİM BANA DER MAM  
 Dİ YE - SAZ - - - - - HİC RA MİBİ RAK  
 TIN GÜ Z E LİM ( : : : )

SANKİ SEN NAĞMELEŞİP SESLERE AKTIN GÜZELİM  
 BİR NEFFES AH İBİSİN BİR NAKTIN BİRİN GÜZELİM  
 NE SAZIN NAĞMESİ ARTIK, NEDE BİR BASKA HEVES  
 BANA DER MAM DİYE HİCRAVI BIRAKTIN GÜZELİM

G. FAHRETTİN TUNÇ