

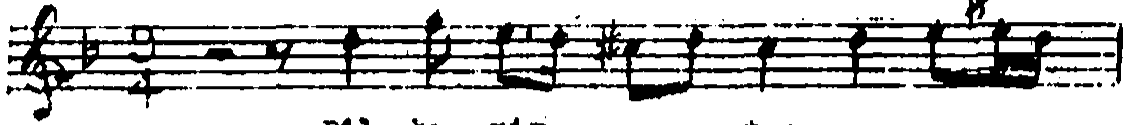
Ağır Aksak

SULTANİYEHAN DAMEL

Çeyre ve Güfte

(Dilberim terk-i sebâta)

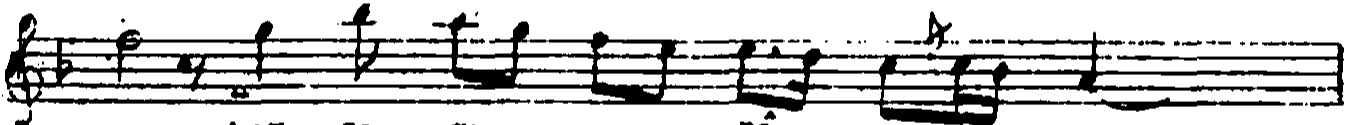
Leylâ Sâz



Dil be rim..... ter.....



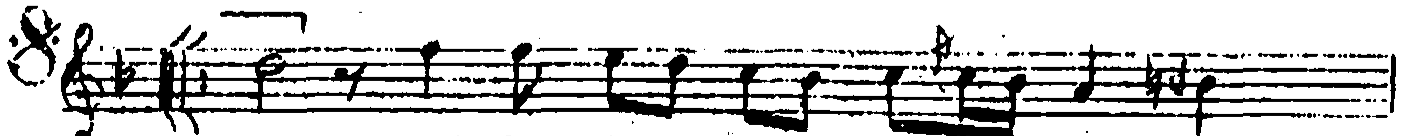
..... ki so bâ..... ta.....



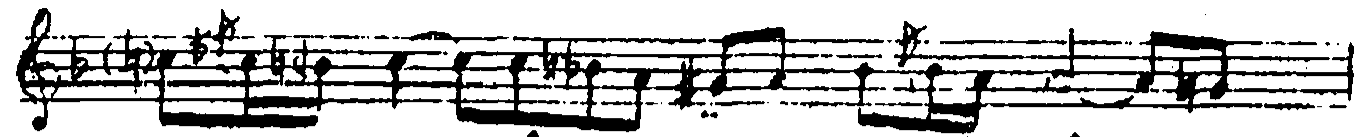
... her za ma..... nâ



.. nâ..... de dir

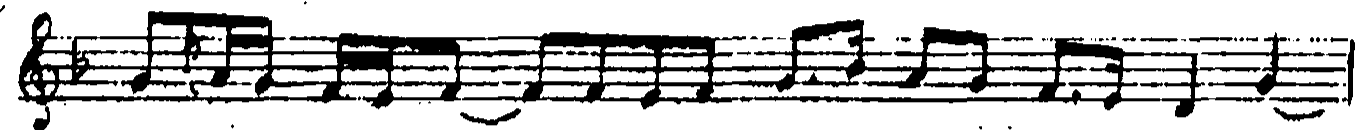


Dest lu ça..... bi
Sev di gin kay



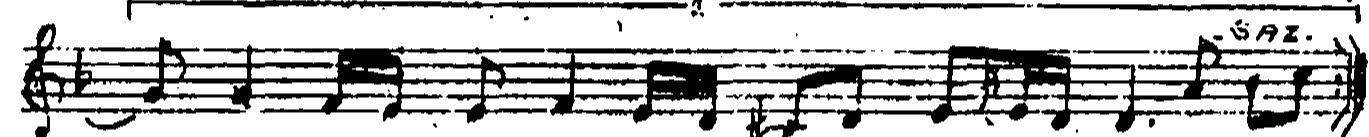
..... gâ ..no her..... câ

di vo is dan



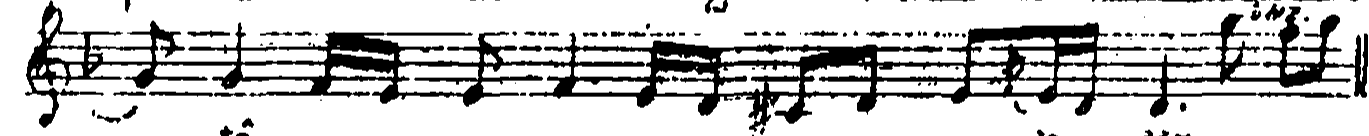
..... li so..... uf.....

her ça man â



tâ do dir.

zâ do dir



tâ do dir

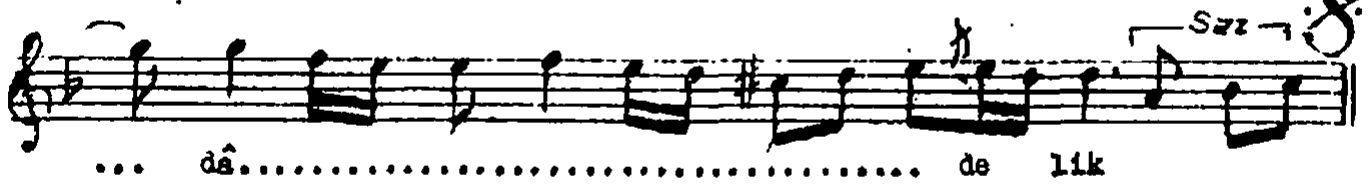


Boş ge lir..... â

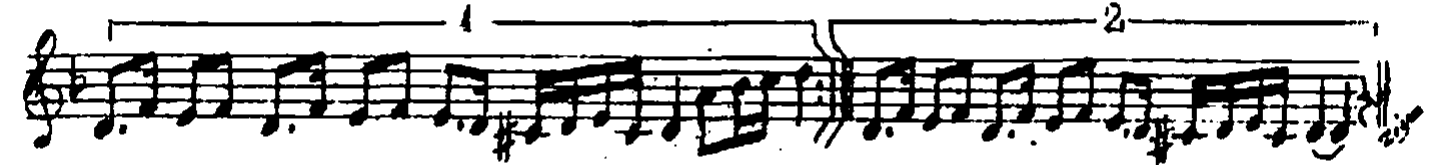
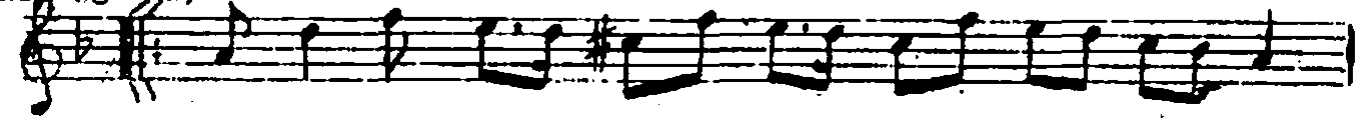


Sultanîyegâh Şarkının devamı

2.



(Arpaşmogi)



Dilberim terk-i sebâte her zaman âmededir
 Dostluğa bigâne herçârlığı üftâdedir
 Hoş gelir avarelik o'nalıne dil dâdedir
 Sevdiğim kayd-i vefâdan dâimâ âsâdedir.

Sebat - Sabır
 Âmede - gazır
 Bigâne - Yabancı
 Üftâde - Düşkün
 Avarelik - Başboşluk
 Dildâde - Gönül vermiş
 Âsâde - Serbest