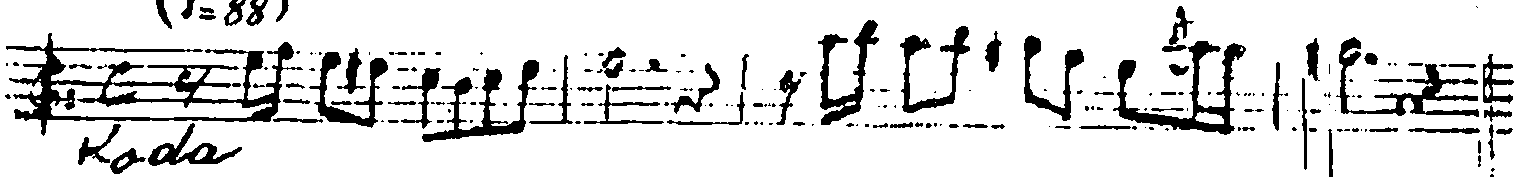


düyek

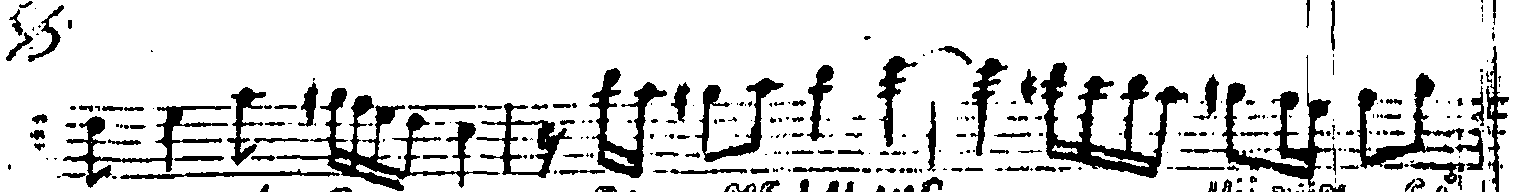
Suzidil Sade

R. Okutlu

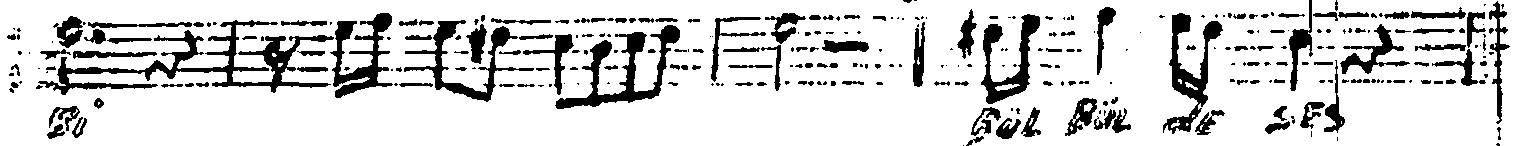
(1=88)



Koda



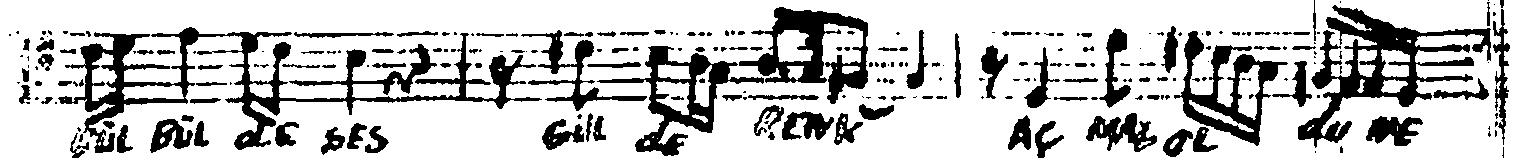
BA HAR DA BU YOL BİR ME LAL VAR NÜ ZÜN Gİ



GİL BİL DE SES



GİL DE RENK AÇ MAZOL DÜ NE DEN

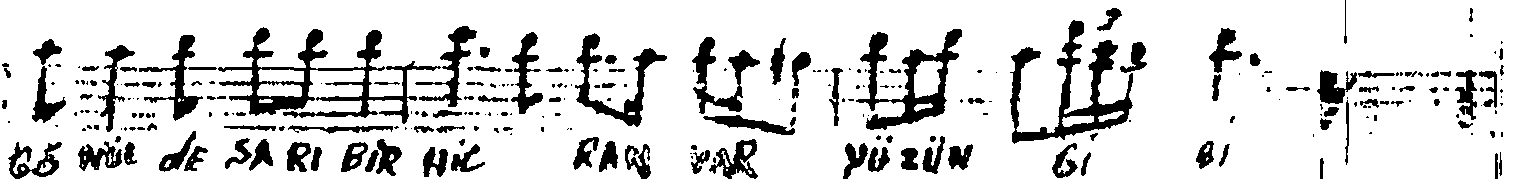


GİL BİL DE SES GİL DE RENK AÇ MAZOL DÜ NE



SON

DEN



Bİ Rİ DE SA RI BİR NİC KAKI VAR YÜ ZÜN Gİ Bİ

BÖ NİL DE SA RI BİR NİC RAN VAR
YÜZÜN Gİ Bİ

Bakarda bir melal var yüziim gibi
Bülbiilde ses gülden renk aymaz oldu neden
gönüilde san bir hicran var yüziim gibi
Neharat