

SÛZİDİL SAZ ESERİ

USÛLÜ : SEMÂİ

ÖZLEM

♩ = 144

MÜZİK : PINAR KÖKSAL

1. HÂNE

The first Hâne section consists of four staves of music. The first staff begins with a treble clef, a key signature of three sharps (F#, C#, G#), and a 3/4 time signature. The melody is composed of eighth and quarter notes, ending with a half note. The second and third staves continue the melody with similar rhythmic patterns. The fourth staff concludes the section with a double bar line and repeat dots.

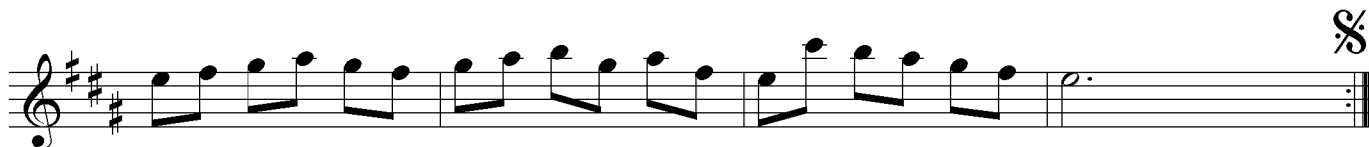
TESLİM

The Teslîm section consists of four staves of music. It begins with a treble clef, a key signature of three sharps (F#, C#, G#), and a 3/4 time signature. The melody is composed of eighth and quarter notes, ending with a half note. The second and third staves continue the melody with similar rhythmic patterns. The fourth staff concludes the section with a double bar line and repeat dots.

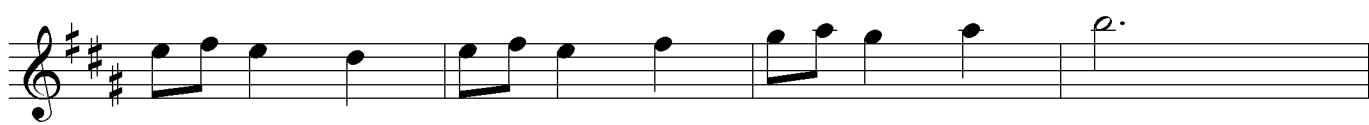
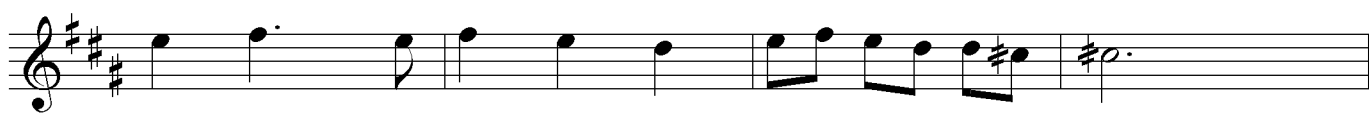
(SON)

2. HÂNE

The second Hâne section consists of two staves of music. The first staff begins with a treble clef, a key signature of three sharps (F#, C#, G#), and a 3/4 time signature. The melody is composed of eighth and quarter notes, ending with a half note. The second staff continues the melody with similar rhythmic patterns, ending with a half note.



3. HÂNE



faruk pahin