

Semâf

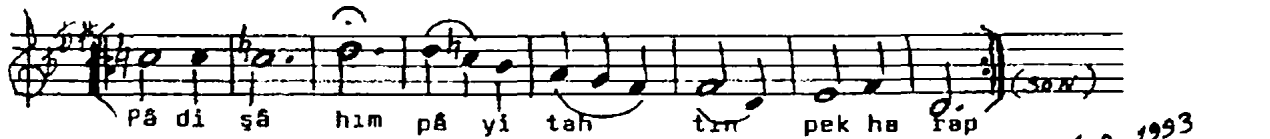
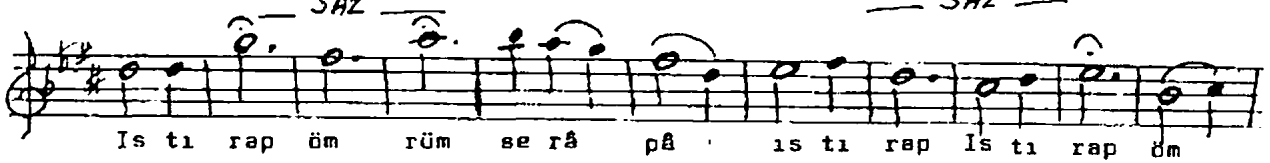
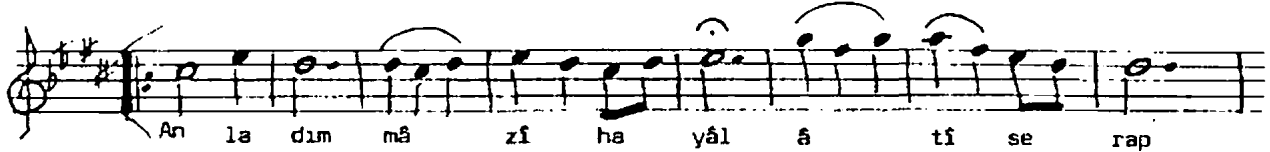
.ŞEDDİARABAN ŞARKI
(ANLADIM MÂZÎ HAYÂL)

Beste: Rûştü Eriç
Söz: Dr.Cahit Öney

(♩:56)



— SAZ —



Anladım mâzî hayâl âtî serap
İstirap ömrüm serâpâ istirap
Lûtfet îmâr et dil-i vîrâneyi
Pâdişâhım pâyitahtın pek harap

Fâilâtün fâilâtün fâilün

6.9.1993

P. Eriç