

ŞEDD-I ARBERŪ ŞARKI

Bestekârî :

Cür'una (BİR SANA HASREYLEMİŞİM ÖMRÜMÜ ÂMÂLİMİ)

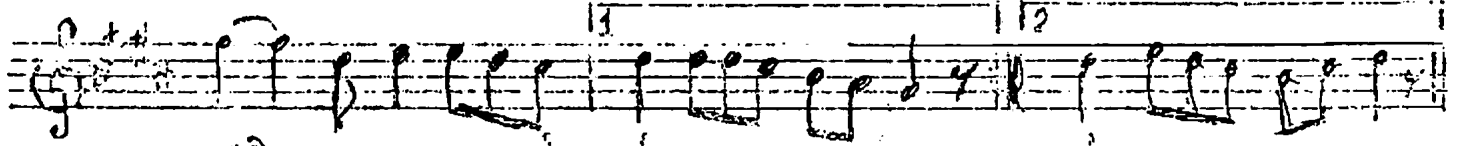
LEYLA HANIM



BİR SA NA - - HAS - - REY LE Nİ - -



SİM ÖM RÜ MÜ Â



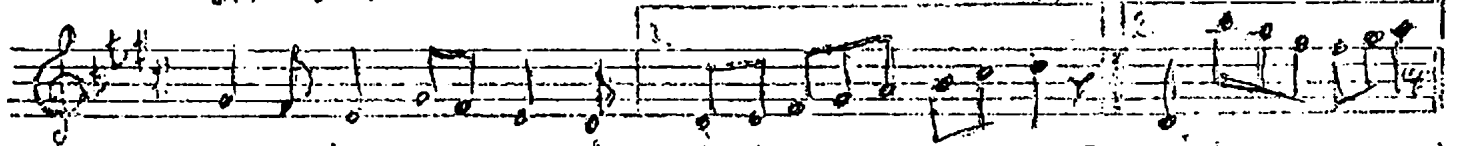
MÂ Lİ Nİ (- saz - -) Mİ (- saz -)



HA KI SÂR - - ET DİM YO LUN



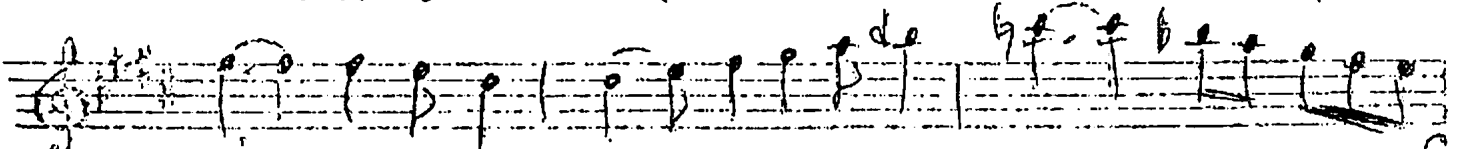
DA KAL BI Nİ İK



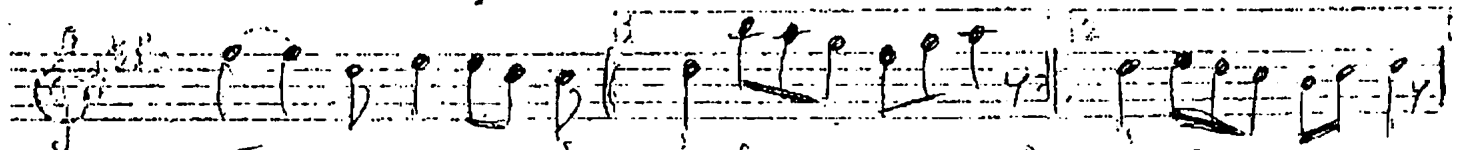
BÂ Lİ Mİ (- saz - -) Mİ (- saz -)



SÖY LE LÂ - - KAY - - DA NE GEÇ - -



İİ SÖZ - MA DÂR - - İK



VÂ Lİ Mİ (- saz - -) Mİ (- saz - -)

BİR SANA HASREYLEMİŞİM ÖMRÜMÜ ÂMÂLİMİ
 BİR SANA HASREYLEMİŞİM ÖMRÜMÜ ÂMÂLİMİ
 BİR SANA HASREYLEMİŞİM ÖMRÜMÜ ÂMÂLİMİ
 BİR SANA HASREYLEMİŞİM ÖMRÜMÜ ÂMÂLİMİ