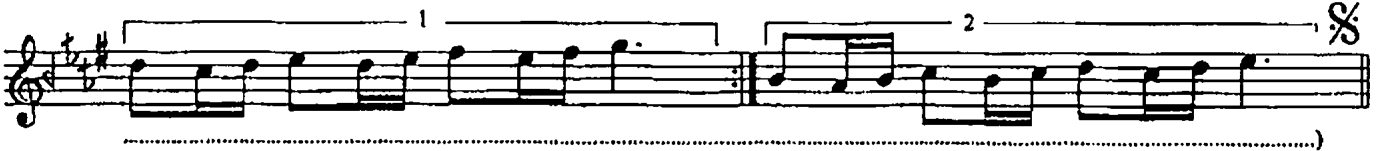
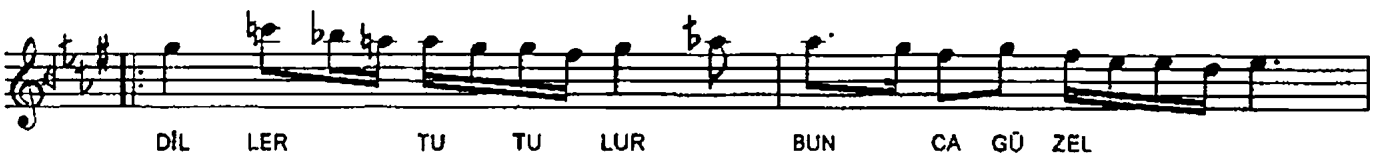
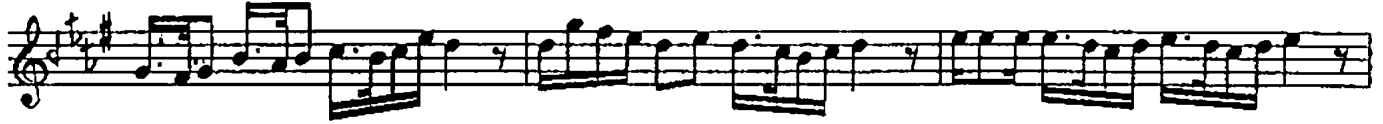


SÜZ-NÂĞ ŞARKI
HİDİV KASRI

AKSAK

♩ : 98

GÜFTE : YASİN HATİBOĞLU
BESTE : ÂMİR ATEŞ



KASRIN AÇILAN PENCERESİNDEN LEBİDERYA GÖRÜNÜR
AKŞAMLARI İSTANBULUN UFKUNDA HÜMEYRA GÖRÜNÜR
DİLLER TUTULUR, BUNCA GÜZELLİKLERİ TARİF EDEMEZ
BİR BAŞKA YERİNDEN, YEDİ KANDILLİ SÜREYYA GÖRÜNÜR