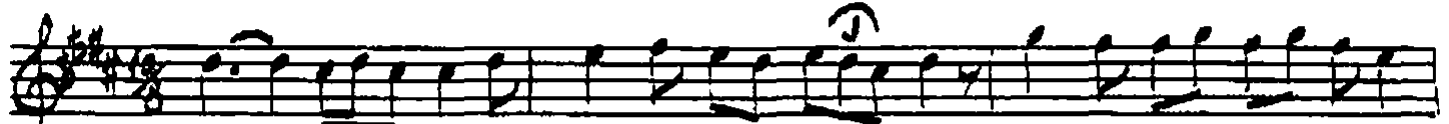


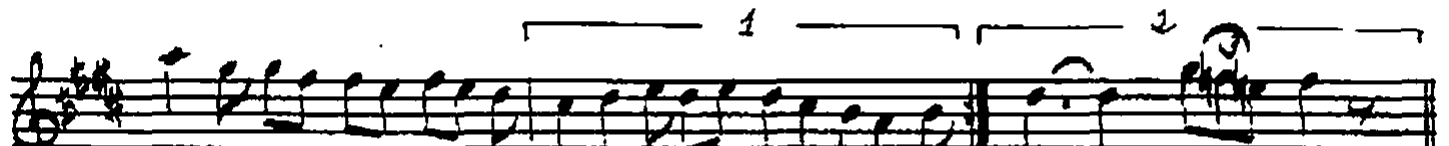
ŞEDARABAN ŞARKI

Çurçuna

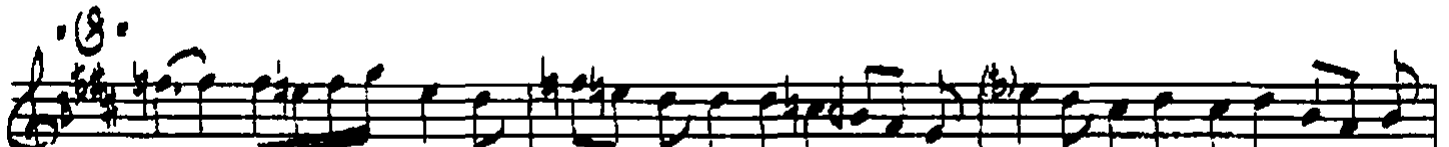
Muallim İsmail Hakkı Bey



Dil has ta sı yım yok mu be nim



der di me cā re re - SAZ -




Hic rin a çı yor kal bi pür ā



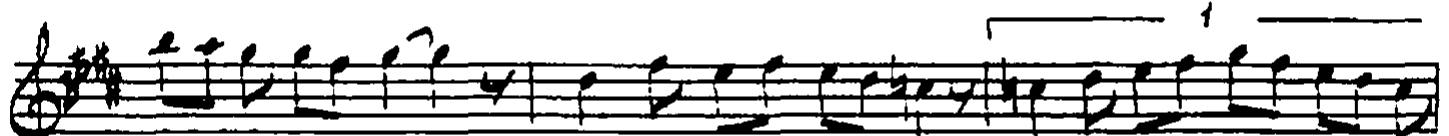
lâ mi ma cā re - SAZ - Hic rin



a çı yor kal bi pür ā lâ mi ma cā



re - SAZ - re Kus det

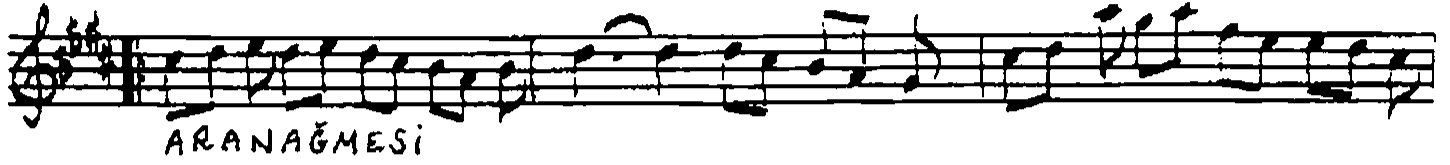


me sa kin mer ha met et bu di li zā

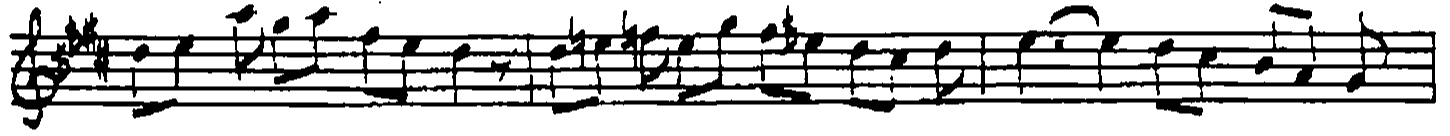


re bu di li zā re - SAZ -

ŞEDARABAN SARKI (Devamı)



ARANAĞMESİ



Dil hastasuyum yok mu benim derdime göre
Hicrin açıyor kalb-i pür-âlâmuna yâre
Kasdetme sakın merhamet et bu dil-i zâre
Hicrin açıyor kalb-i pür-âlâmuna yâre

Df. 180/370

Muallim İsmail Hakkı Beyin TRT.deki
kolleksiyonundan yazıldı. 