

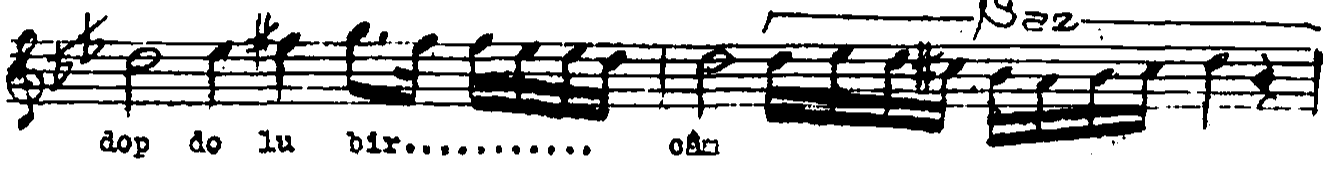
ŞEDARADAN ŞARKI

Sengin Senfi

Len'i Atli



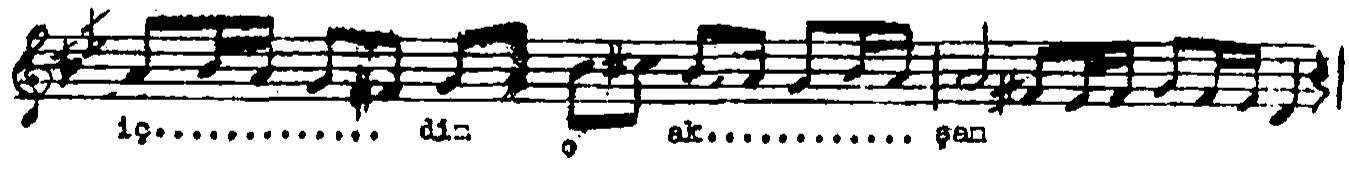
Â mâ de i ken bâ ..... de i le



dop do lu bir..... cân *Saz*



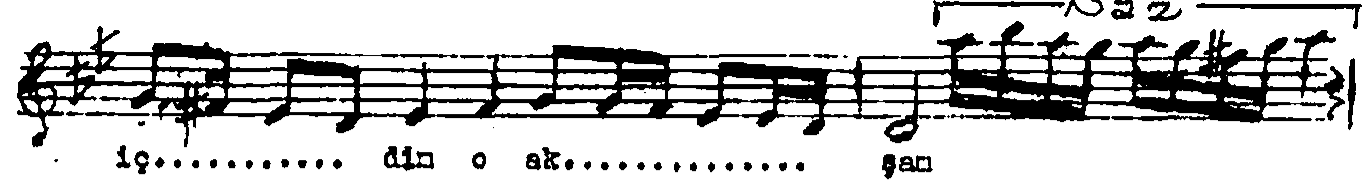
Ber rak se si ni ney ye ri ne



ıç..... dın ak..... şan



ber rak se si ni ney ye ri ne



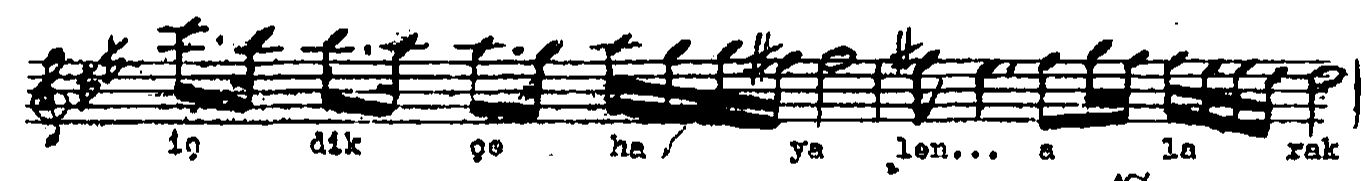
ıç..... dın o ak..... şan *Saz*



ıç dik çe ha ya len a la rak



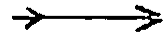
bâ ..... se i gül..... fân *Saz*

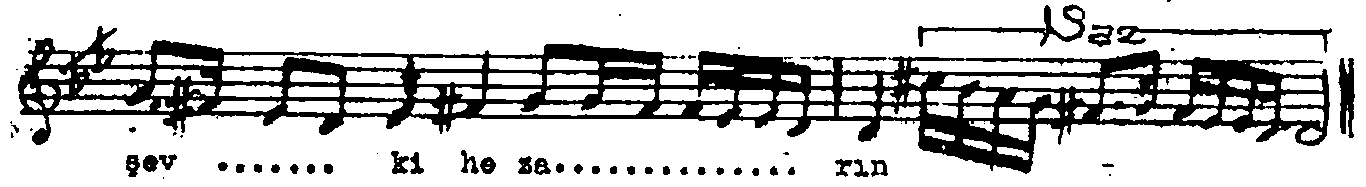
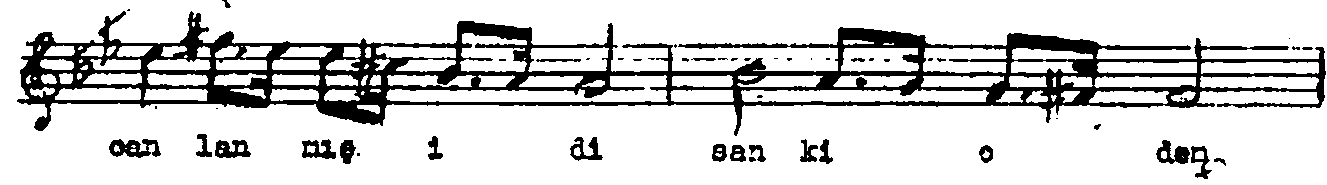
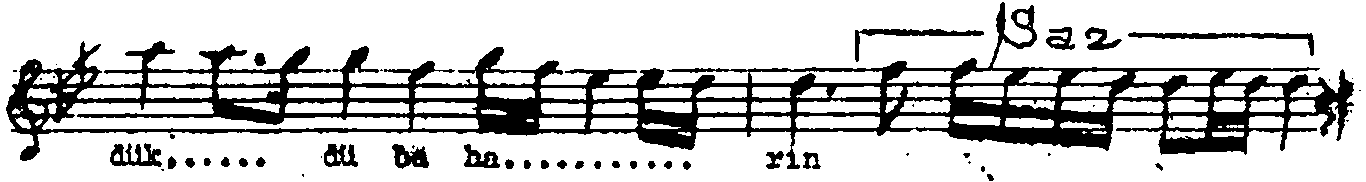
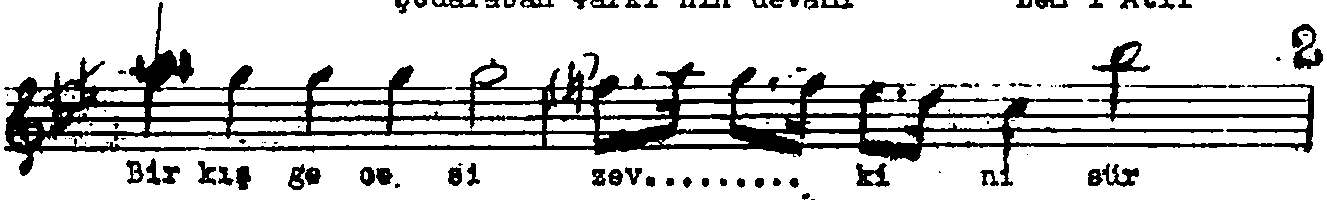


ıç dik çe ha ya len... a la rak

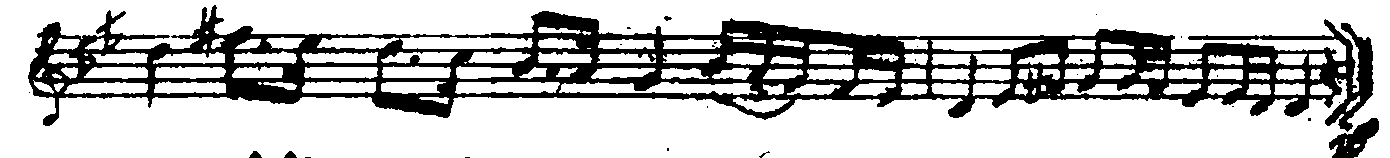
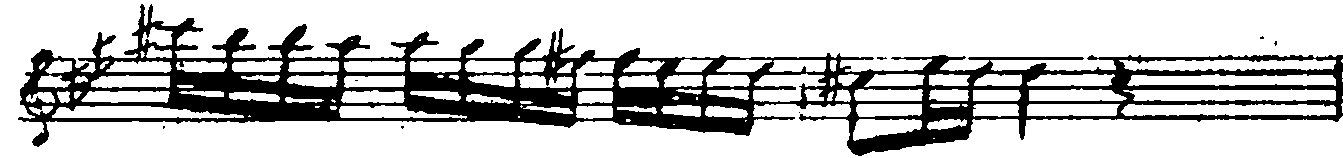


bâ ..... se i gül..... fân *Saz*





(Aranâğnesi)



Anâde iken bâde ile doydolu bir cân,  
 Berrek sesini mey yerine içdin o akşan  
 İçdikçe hayalen alarak buse-i gül fân  
 Bir kiş gecesi zevkini sürdükdü baharın  
 Canlanmış idi sanki o den şevki, nezârin .

(T.Kornan'dan)