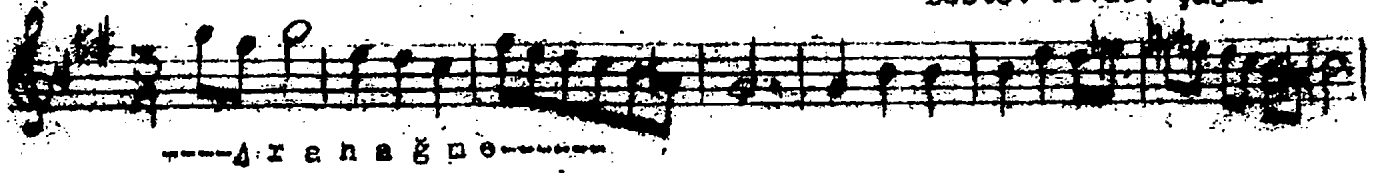


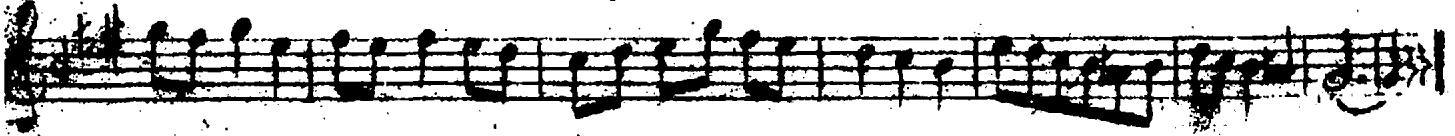
Semâî

(O SIYAH GÖZLÜ KADIN)

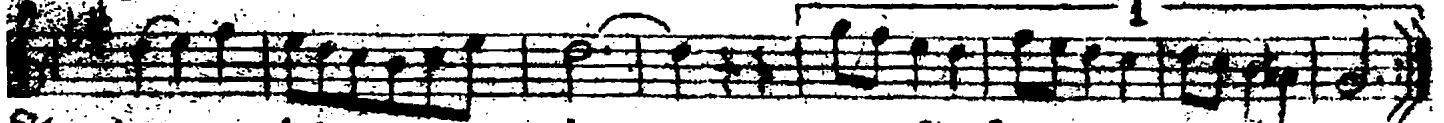
Sysinâk Şarkı
Güfte: Mustafa Nâzım İsmak
Beste: Cevdet Çağla



-----A r e n a ğ ı n e-----

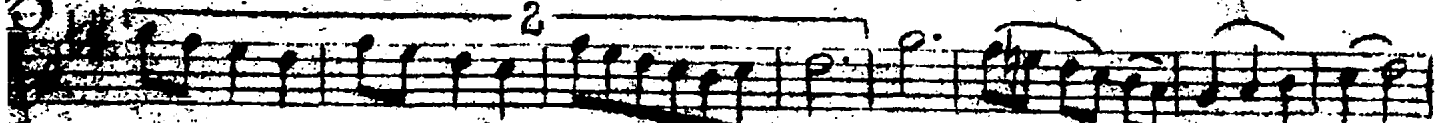


Gön lüm ku ru bir gül gi bi tit rer

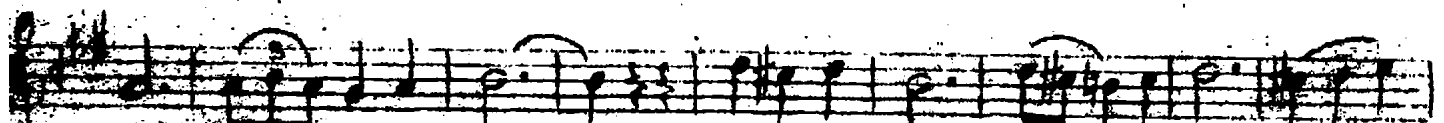


ka na dan..... da

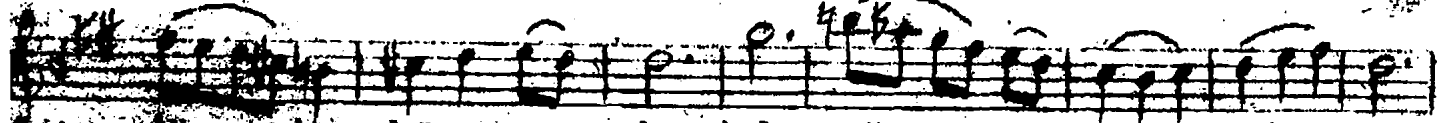
-----S A Z-----



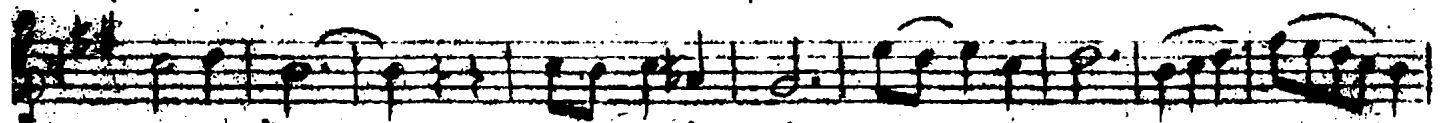
-----S A Z----- Kalp ağ..... rı sı.....



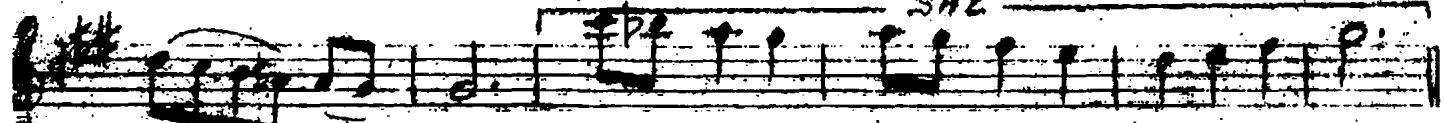
duy..... dum o si yah o si yah göz



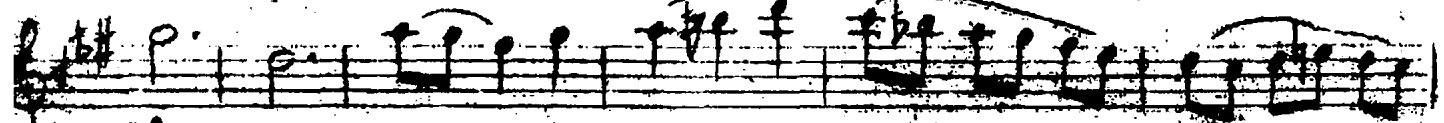
lu ka dan da kalp ağ rı sı..... duy



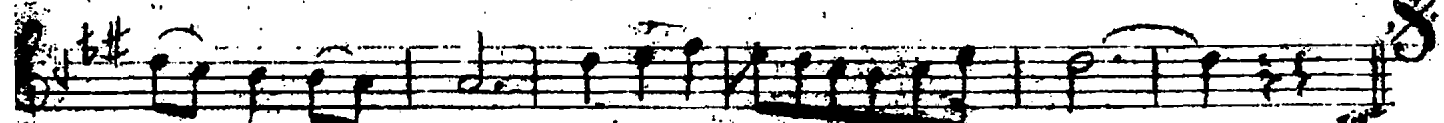
..... dum o si yah o si yah göz lü ka



dan..... da



Rû hum ü şü yor..... ka na.....



i lâ hi ka na dan..... da

Gönlüm kuru bir gül gibi titrerken adında
Kalp ağrısa duydum, O siyah gözlü kadında
Rûhum uşuyor, aşkın ilâhî kanadında
Kalp ağrısa duydum, O siyah gözlü kadında.