

ŞED-ARABAN ŞARKI-

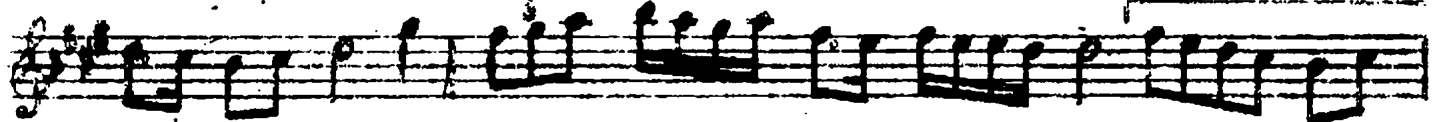
Ağır Aksak

( Ne zaman ol gözü... )

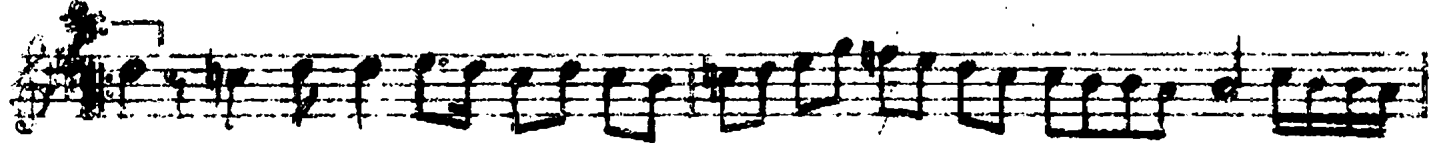
Ali Salâhi Bey



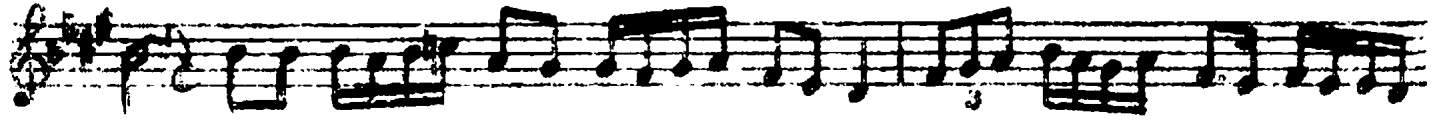
Ne sa man o ..... l gö zü mes ta ne ge



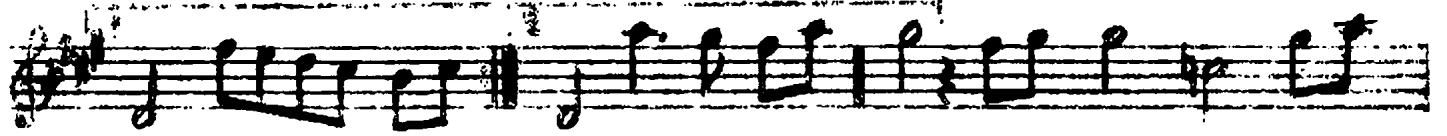
lir ha ..... ti ri ma ( S A Z )



İb ti dâ i ..... 9 di ği pey ma  
Sev mem ol me ..... h ve ş i de yâ



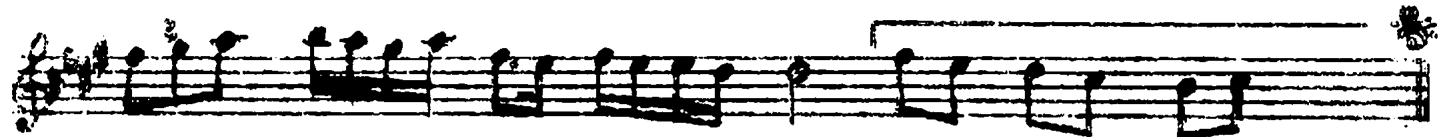
ne ge li ..... r ha ..... ti ri  
ne ge li ..... r ha ..... ti ri



ma ( S A Z ) ma ( S A Z ) Be ni sev me .....



.....s diye bi hâ ..... desi te ... n e .....



..... y le me sin ( S A Z )

*P. Lillie*

Ne zaman ol gözü mestâne gelir hâtırına  
İbtidâ içtiği peymâne gelir hâtırına  
Beni sevmes diye bîhûde sitem eylemesin  
Sevmem ol mehveşi de yâ ne gelir hâtırına