

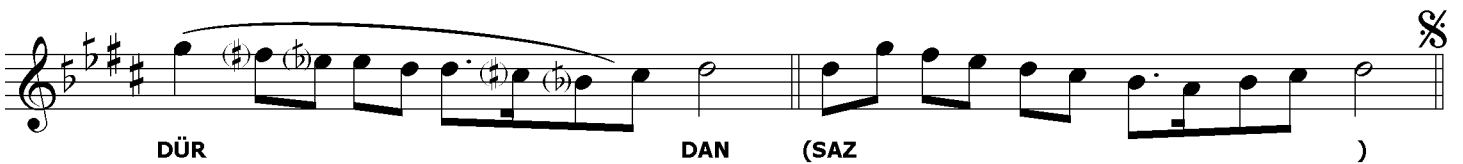
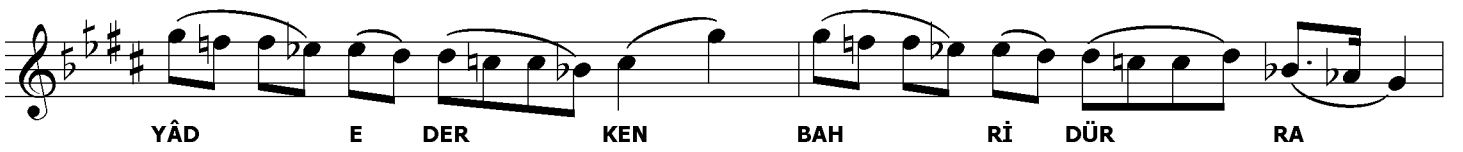
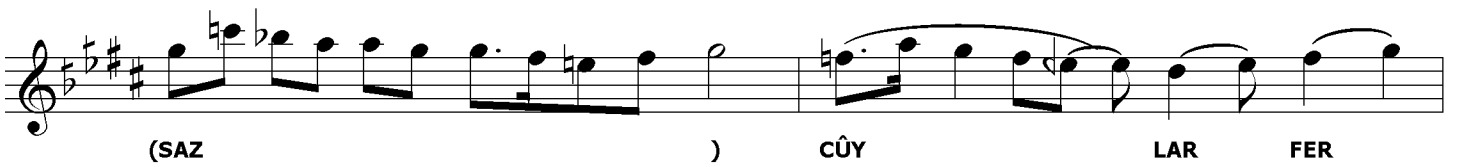
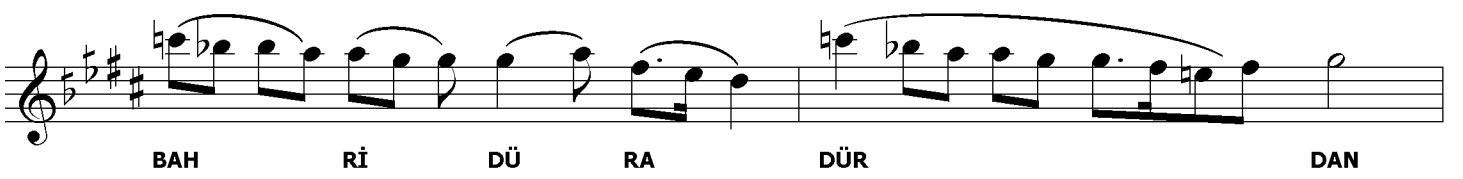
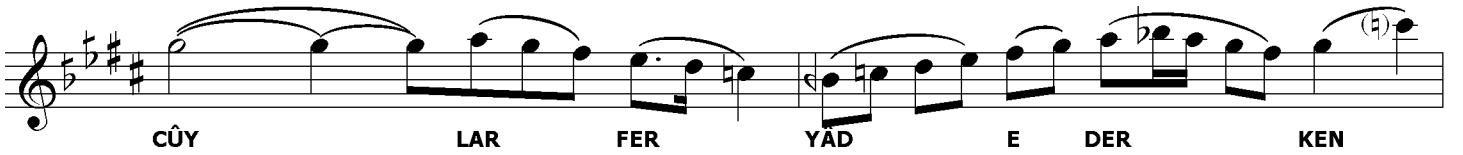
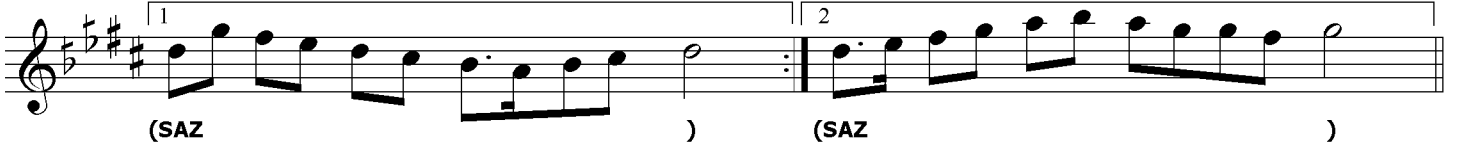
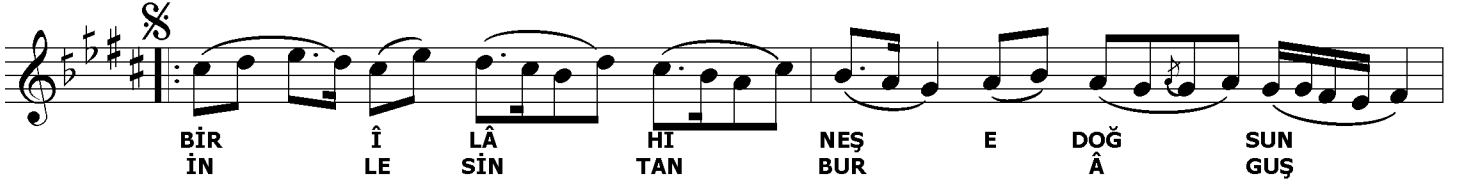
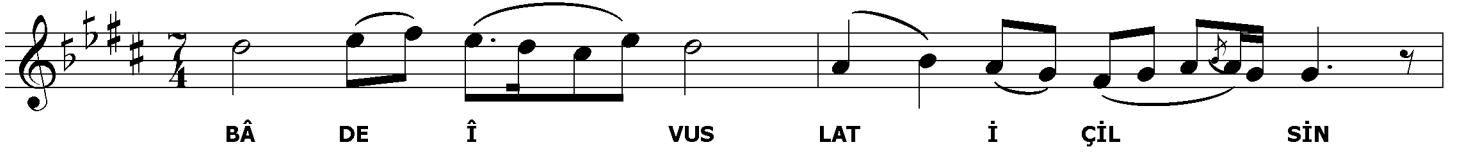
ŞEDARABAN ŞARKI

BÂDE-Î VUSLAT İÇİLSİN KÂSE-Î FAĞFURDAN

USÛLÜ : DEVR-İ HİNDİ

SÖZ : ABDÛLBÂKİ BAYKARA

MÜZİK : FÂİZE ERGİN



ARANAĞME

faruk bahin

**BÂDE-Î VUSLAT İÇİLSİN KÂSE-Î FAĞFURDAN
BİR İLÂHİ NEŞ'E DOĞSUN NAĞME-Î TANBURDAN
CÛYLAR FERYÂD EDERKEN BAHR-İ DÜRRÂDÜRDAN
İNLESİN TANBUR ÂGUŞ U VİSÂLİ YARDAN**