

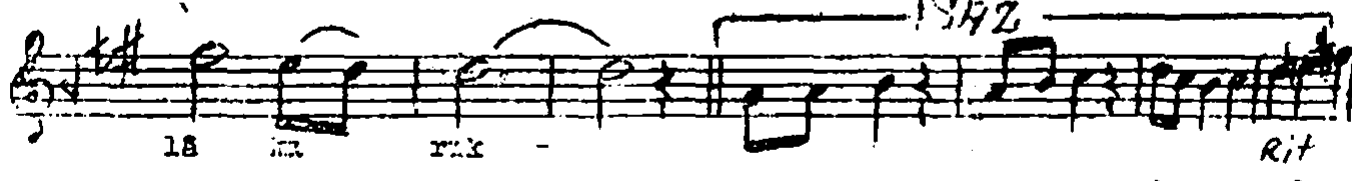
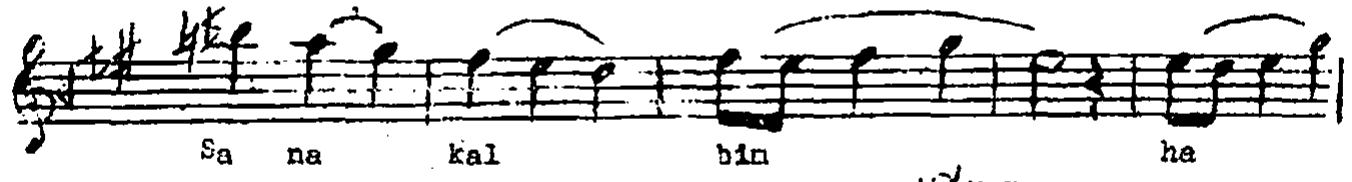
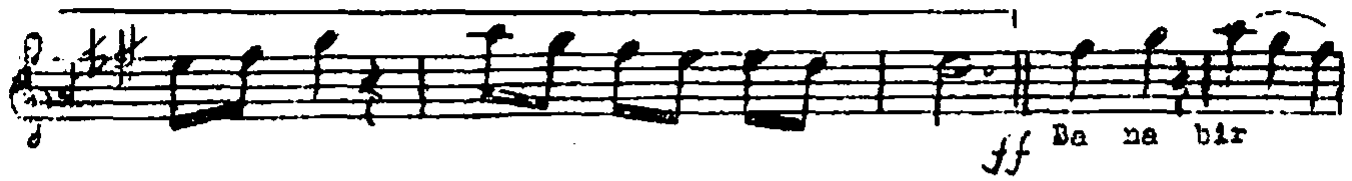
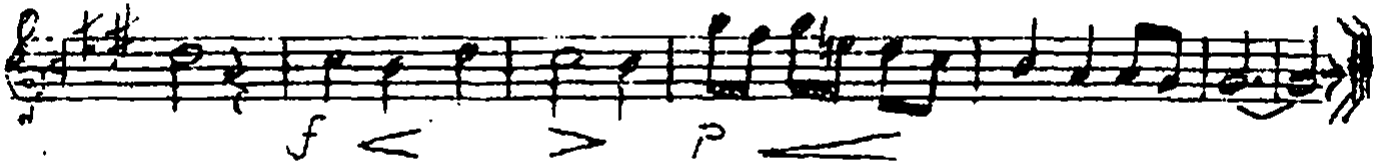
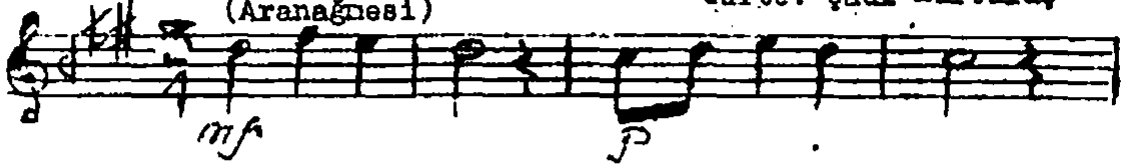
SUZİNÄK ŞARKI

Deste: Dr. Alâeddin Yavaşca

Senei- Curcuna

Güfte: Şâdi Kurtuluş

(Aranânesi)



Sa na kal bin ha lâ ki rik
 Del ki ge çer....

.. zan net riş tin dargınlık lar ve kir
 gırlık

Mer ha met siz ol na ol na

by le sa na kal bin

ha lâ ki rik

Sa na kal

bin ha lâ ki

(Cürceyna) rik Da zen sa na

dö nü yo run Ma zi de ki sev gi niz le

Da na bir gün dön müş ol san sa na kal bin ha lâ ki rik