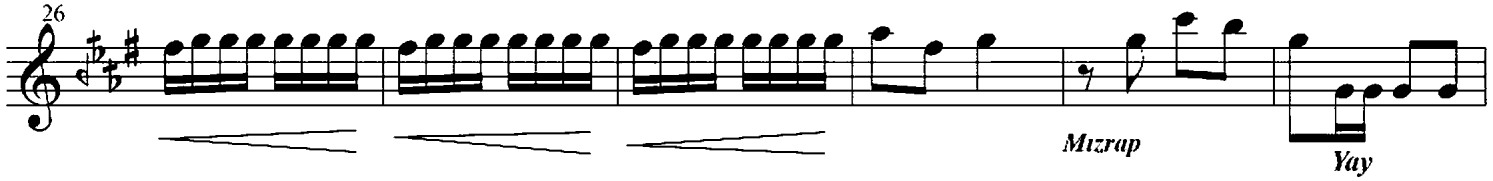
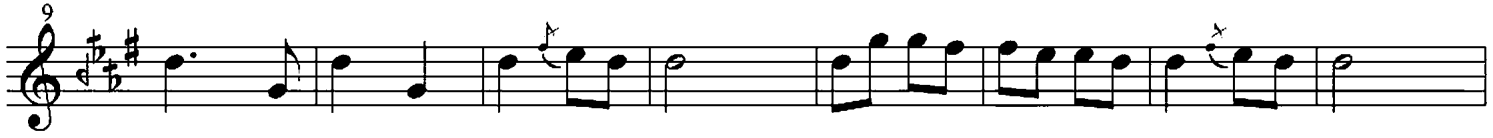


# SUZİNAK LONGA

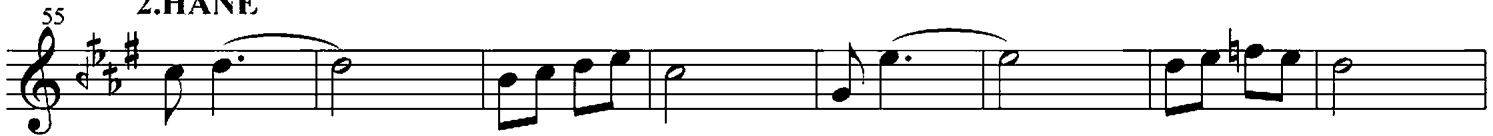
(Minel Aşk)

♩ =120

## 1.HANE



## 2.HANE



# Suzinak Longa 2. syf (Minel Aşk)

Musical score for Suzinak Longa 2. syf (Minel Aşk). The score is written in treble clef with a key signature of one sharp (F#) and a 7/8 time signature. The piece consists of ten staves of music, starting at measure 71 and ending at measure 140. The score includes various musical notations such as slurs, dynamics (p, mf, f), and triplets. A section starting at measure 88 is marked '3.HANE' with a repeat sign. The piece concludes with a double bar line and a repeat sign at the end of the final staff.

71

79

88 3.HANE

96

104

112

116

120

126

134

140