

ŞEHNÂZ ŞARKI

SÜZÜLEN AYNALAŞAN BİR SUYA AKMIŞ GİBİYİM

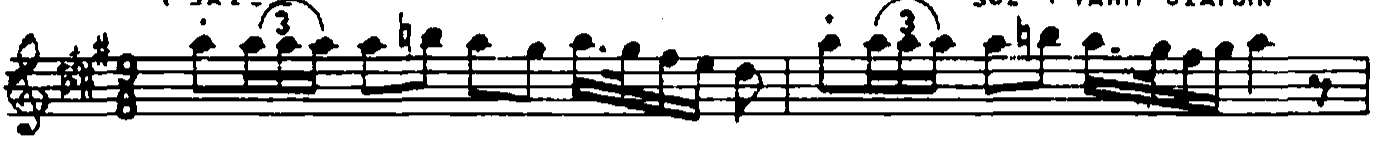
MÜZİK: ALÂE ODİN YAVAŞCA

SÖZ : YÂHİT ÖZAYDIN

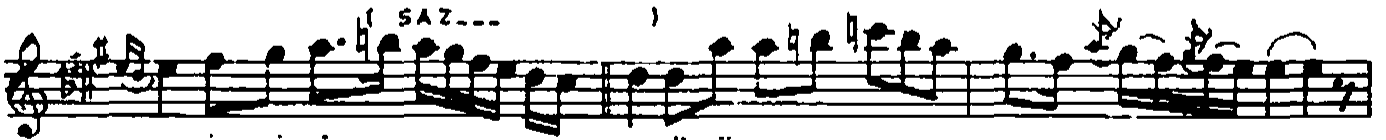
♩ = 108

AKSAK

(SAZ---



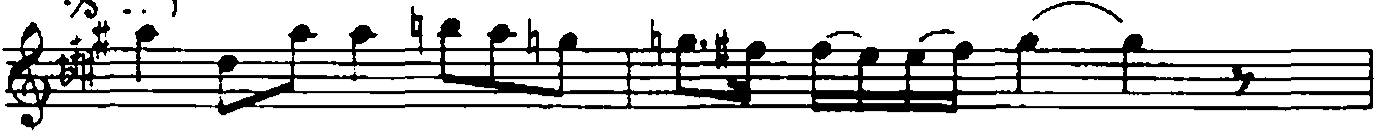
SÜ-ZÜ-LEN AY-NA-LA-ŞAN BİR SU-YA AK- MIŞ



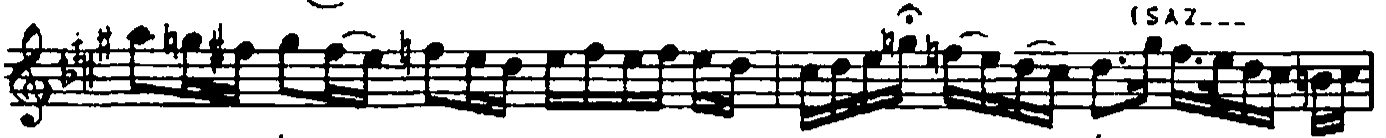
Gİ- Bİ-YİM SÜ-ZÜLEN AY- NA- LA- ŞAN



BİR SU-YA AK- MIŞ- Gİ- Bİ- YİM



O- DE- RİN DÖZ- LE- Rİ- NİN
O GÜL- EN- DÂ- MI DU- RUP



REN- Gİ- NE BAK- DİK- CA SE- NİN
SEY- Rİ- NE DAL- DİK- CA SE- NİN



O DE- RİN BÖZ- LE- Rİ- NİN
O GÜL- EN- DÂ- MI DU- RUP

REN_ GI_ NE BAK-DIK_ SEY_ RI_ NE DAL-BIK_ CA SE_ NİN CA SE_ NİN [SON]

(SAZ---) RU_ HU_ NU BEN_ Lİ_ Ğİ_ Mİ SEN_ DE BI_ RAK_ MIŞ

(SAZ---) GI_ Bİ_ YİM RÜ_ HU_ NU BEN_ Lİ_ Ğİ_ Mİ

(SAZ---) SEN_ DE BI_ RAK_ MIŞ GI_ Bİ_ YİM

SÜZÜLEN AYNALAŞAN BİR SUYA AKMIŞ GİBİYİM
 O DERİN GÖZLERİNİN RENGİNE BAKTIKÇA SENİN
 RÜHÜMÜ BENLİĞİMİ SENDE BIRAKMIŞ GİBİYİM
 O GÜL ENDAMI DURUP SEYRİNE DALDIKÇA SENİN

VÂHİT ÖZAYDIN