

# TAHİR

# İLÂHÎ

Güftesi : kimin olduğu meçhuldür.

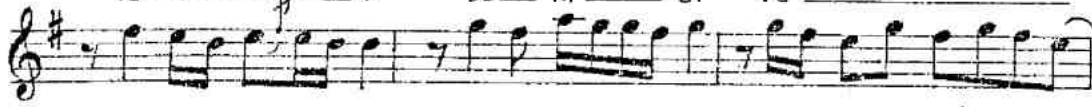
Bestesi : müezzîn Halit Beyindir

Düyek (♩=120)

Lu t fet ba na e y gaf



fa r be ni af ve



y le a l la hı m be ni a



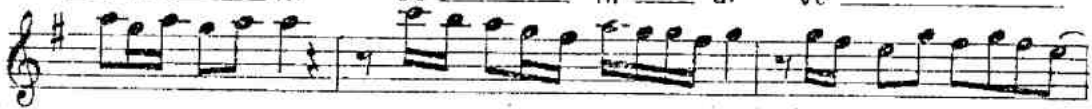
f ve y le a l la hı m



Dü ci ha n i ş re pe na



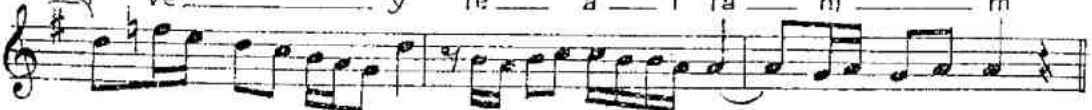
hı m be ni af ve



y le a l la hı m be ni a



ve y le a l la hı m (SON)



*Lutfet bana ey gaffar beni afveyle allahum*

*Dücihan içre penahum beni afveyle allahum*