

# TĀHIR TESBĪH

USŪLŪ: SOFYAN

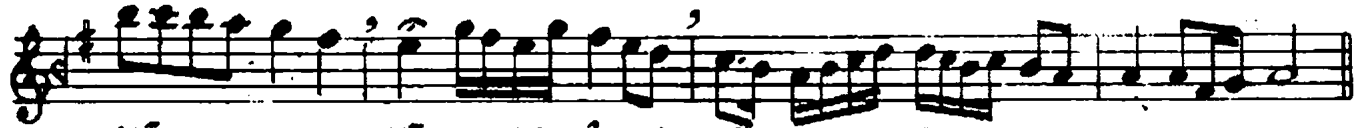
ALLĀHŪMME YĀ CELĪLU YĀ CEBBAR

MŪZİK: ALİ UFKİ

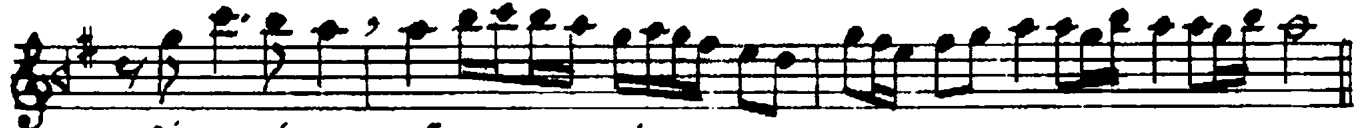
$\text{♩} = 42$



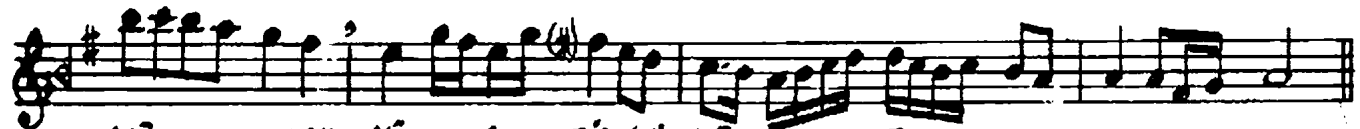
AL LĀHŪMME YĀ CE LİL (U) YĀ CEB BAR



YĀ AL LAH YĀ CE LİL (U) YĀ CEB BAR



Bİ HAM Dİ KE YĀ A ZİL (U) YĀ GAF FAR



YĀ AL LAH YĀ A ZİL (U) YĀ GAF FAR



CE NĀ BE KE YĀ AL LAN



NER CŪ AE	VEKE	YĀ	DEY	YAN	(i)	YĀ MŪ
YĀ MĀ ŞŪ	KEL	Ā	Şİ	KİN	(Nİ)	
YĀ MAT LŪ	BET	TĀ	Lİ	BİN	(Nİ)	
YĀ MAH BŪ	BEL	Ā	Rİ	FİN		



Cİ BES SA İ LİN (Nİ) İĞ FIR LE NĀ



VER HAM LE NĀ , YĀ E MĀ NEL HĀ İ FİN