

USÛLÜ : DÜYEK

# UŞŞAK ŞARKI

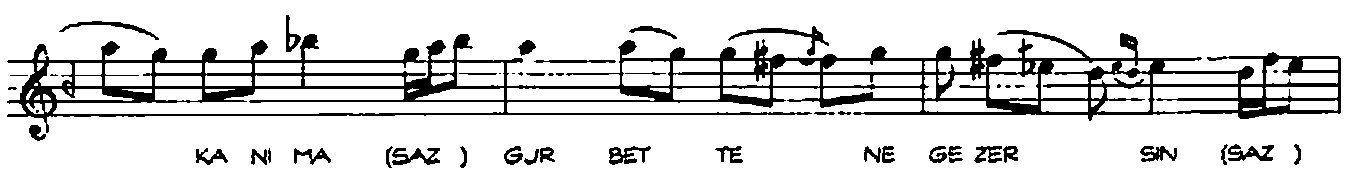
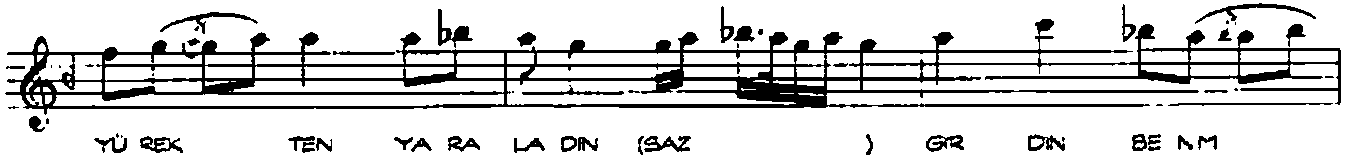
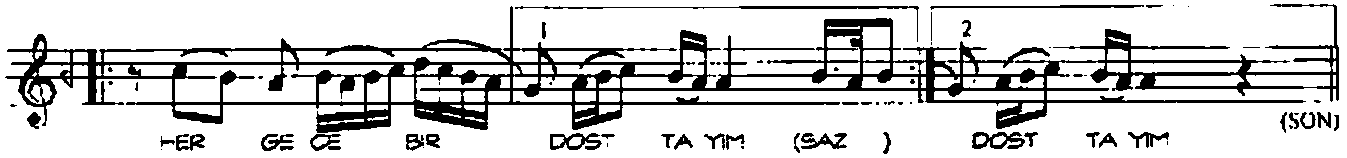
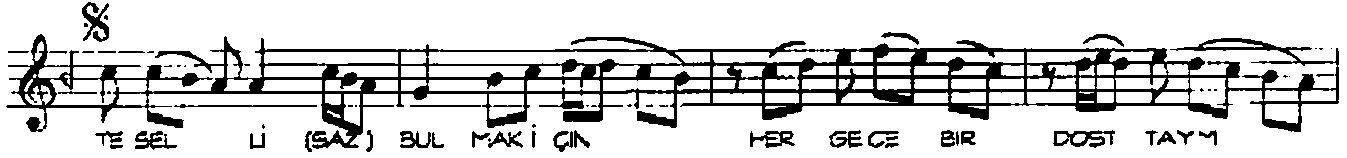
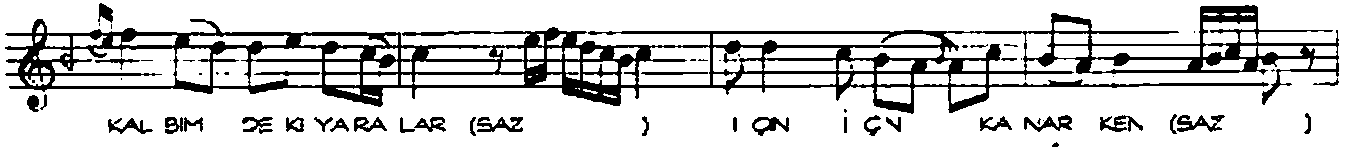
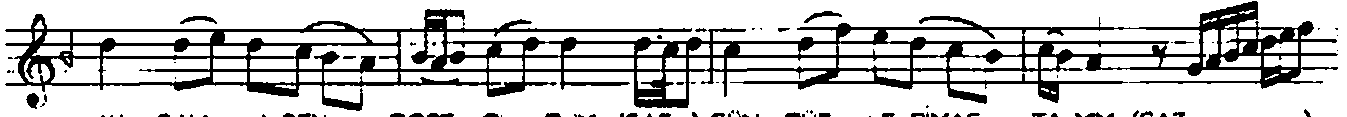
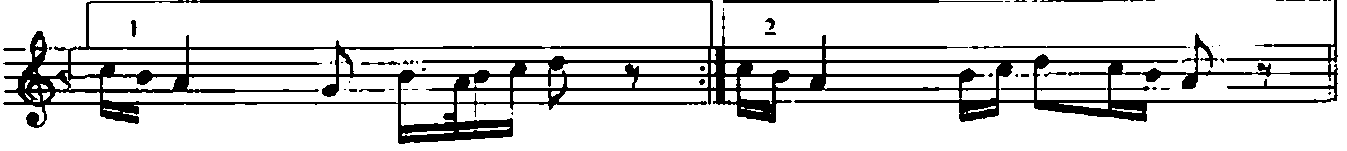
AKŞAMLA BEN DOST OLDUM GÜNDÜZLERİ YASTAYIM

MÜZİK : ALÂEDDİN ŞENSOY

SÖZ : UĞUR GÜR



ARANAGME



HAS RET YET Tİ CA N MA (SAZ ) AY RI LİK BIT  
SIN AR TK (SAZ ) GE RI DÖN GEL YA NI MA (SAZ )

The image shows two staves of musical notation in treble clef. The first staff contains the melody for the first line of lyrics: 'HAS RET YET Tİ CA N MA (SAZ ) AY RI LİK BIT'. The second staff contains the melody for the second line of lyrics: 'SIN AR TK (SAZ ) GE RI DÖN GEL YA NI MA (SAZ )'. The notation includes various note values, rests, and phrasing slurs. A double bar line with a repeat sign is at the end of the second staff.

AKŞAMLA BEN DOST OLDUM, GÜNDÜZLERİ YASTAYIM  
DELYİM, DİVANEYİM, MAŞKINLA HEP HASTAYIM  
KALBİMDEKİ YARALAR İÇİN İÇİN KANARKEN;  
TESELLİ BULMAK İÇİN; HER GECE BİR DOSTTAYIM,

YÜREKTEN YARALADIN, GÖRDÜN BENİM KANIMA  
GURBETTE NE GEZERSİN, HASRET YETTI CANIMA  
AYRIK BİTSİN ARTIK, GERİ DÖN GEL YANIMA  
TESELLİ BULMAK İÇİN; HER GECE BİR DOSTTAYIM