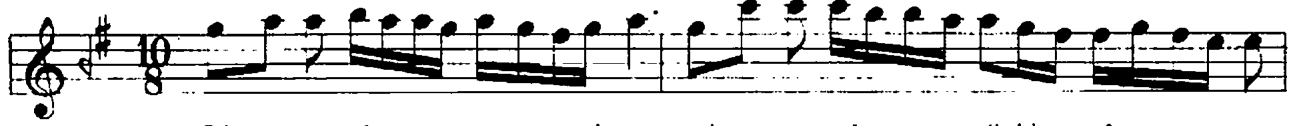


TAHİR AĞIR SEMÂİ

Cânım yerine geldi ki cânânımı gördüm

USUL: AĞIR SEMÂİ

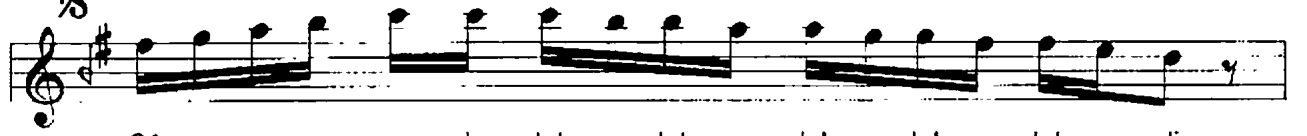
BESTE: NANE AHMED ÇELEBİ



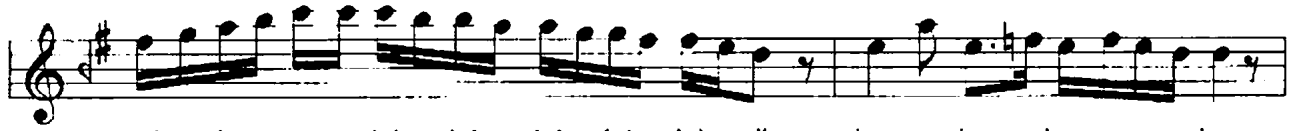
Câ câ nım ye ri ne gel gel di ki câ



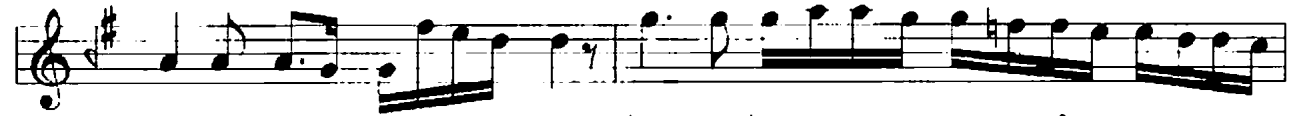
nâ nâ nı mı gör dü düm yâr medet ey



Câ nım ye le lel lel lel lel li



mi rim te re lel lel lel lel li hey he hey hey



ya ri câ nâ nım hey hey yâr



he hey hey dost he hey hey medet ey



vay hey câ nım vay hey câ nım



Gur gur bet de he lâk o ol muş i dim



hi hi hic ri ga mın la yâr me det ey