

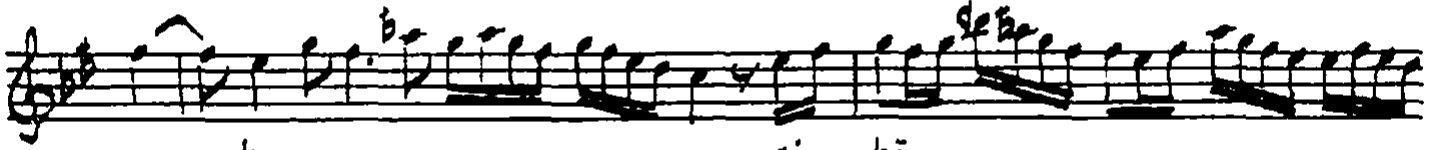
ŞEVKEFZÂ ŞARKI

Usûl: Ağır düyek

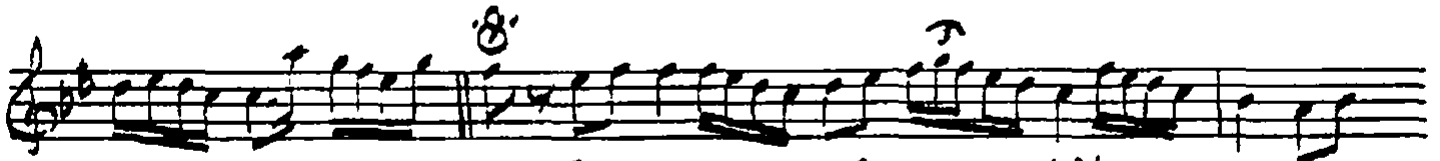
Rif'at Bey



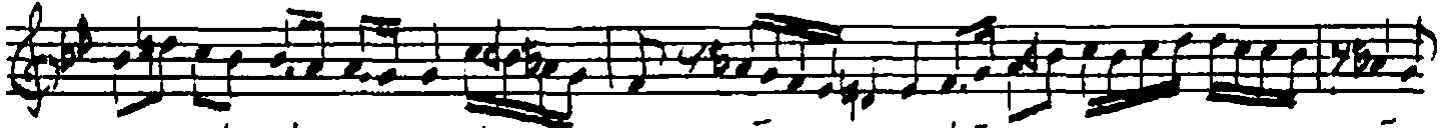
Ey mü rüv vet mâ de ni şâ



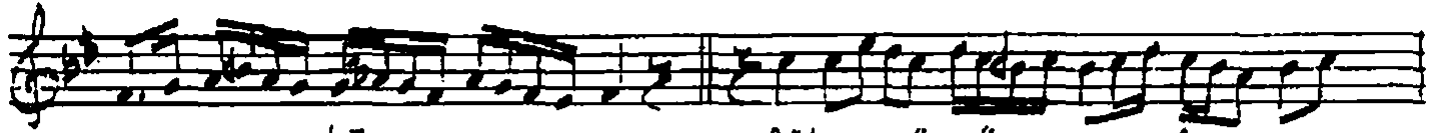
hı ci hân



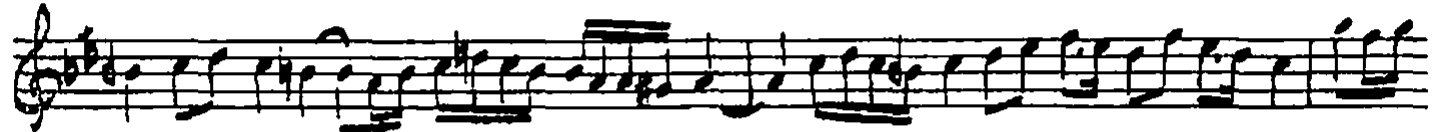
Şâ ye e lût fun
Ben de i nâ gâ



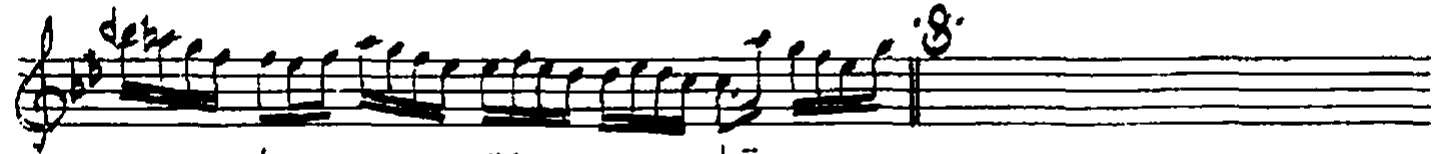
da ol dum şâ ye bân şâ
ru kil din şâ di mân şâ



ye bân şük rü nü i
di mân



fâ da â ciz ken ze bân â ciz



ken ze bân



ARANAĞMESİ

ŞEVKEFLÂ SARKI (Devamı)



Ey mürüvvet mâdeni şâh-ı cihân
Sâye-i lûtfunda oldum sâyebân
Şükürünü ifâda âcizken zebân
Bende-i nâ-cârı kıldın sâd-mân

Df-195/23-24

Muallim İsmail Hakkı Beyin TRT-deki
kolleksiyonundan yazıldı.

İsmail Kesal