

Ş E V K E F Z Â Ş A R K I

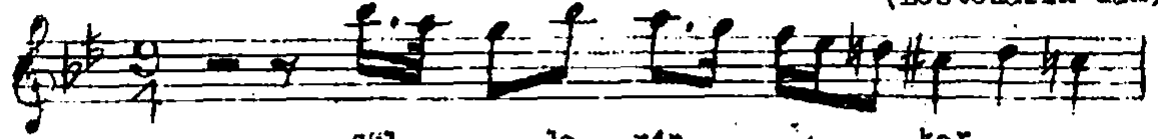
Beste: Niyazi Sayın

Güfte: Necmeddin

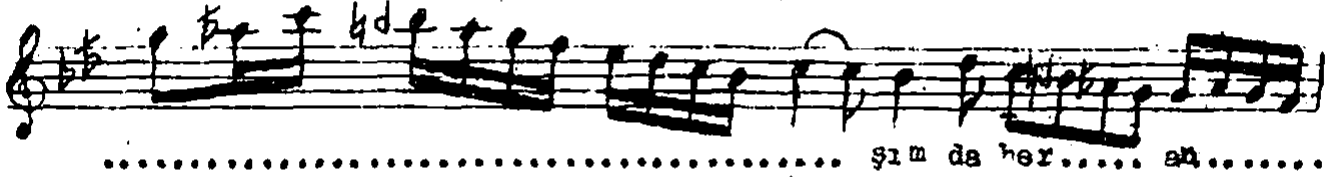
(Bestekârın'dan)

Ağır Aksak

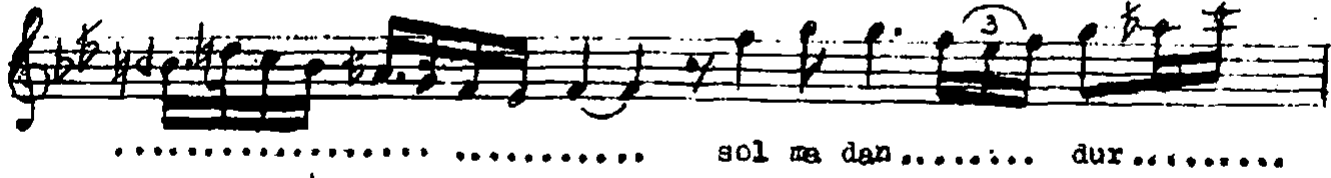
(Güllerin karşında her an)



gül..... le rin..... kar.....



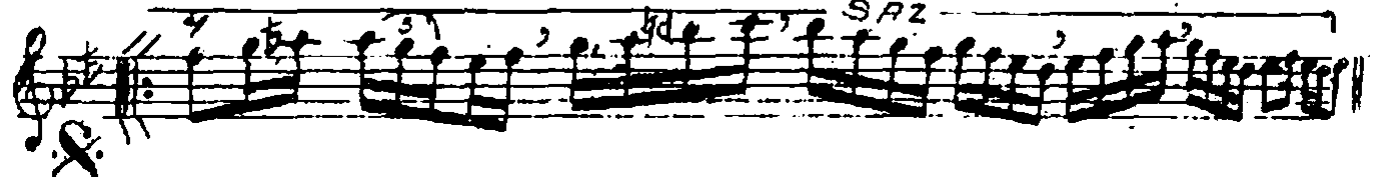
..... şım da her..... an.....



..... sol ma dan..... dur.....

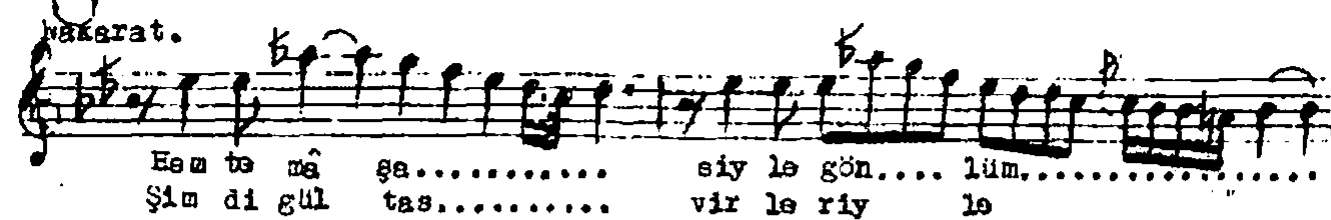


..... mak..... da dır

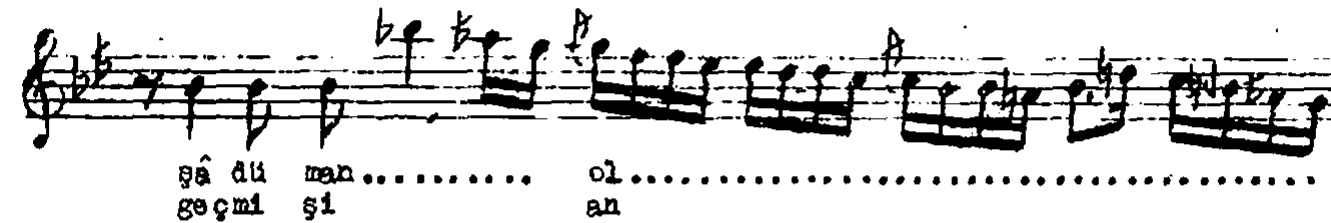


SAZ

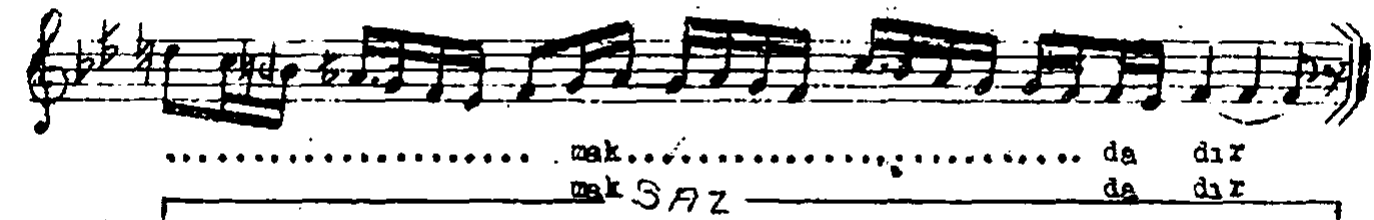
tekerat.



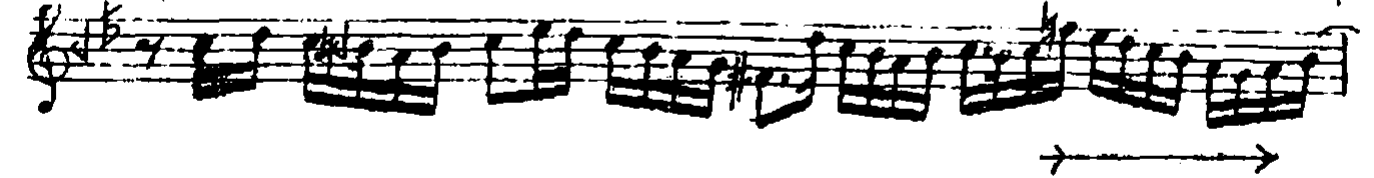
Em te mâ şa..... sıy le gön.... lüm.....  
Şım di gül tas..... vir le riy le



şâ dü man..... ol.....  
geçmi şı an

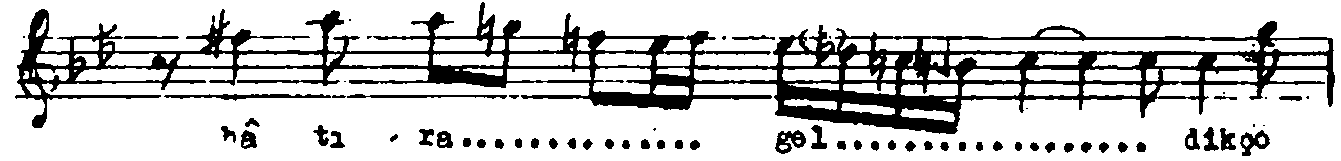
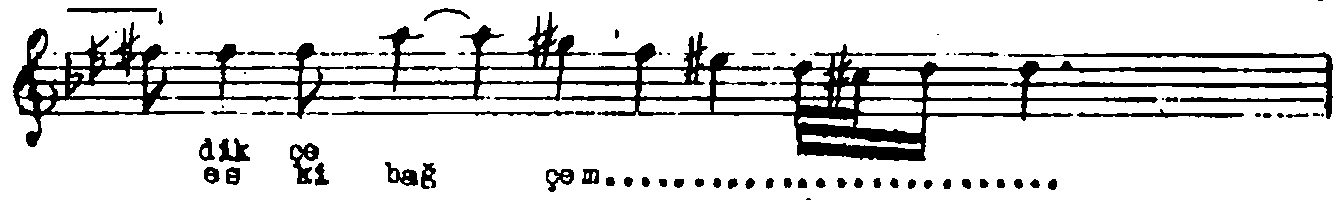


..... mak..... da dır  
mak SAZ da dır



→ →

Şevkefzâ şarkı



Güllerin karşısında her an solmadan durmaktadır  
Hem temâşasıyla gönlüm şadüman olmaktadır.

Eski bağçem hâtare geldikçe didem hûn olur  
Şimdi gül tasvirleriyle geçmişî anmaktadır...