

ŞEHNAZ BUSELİK AĞIR SEMAİ

Kimseyi dil ten ki âzâr itme sultanlık budur

USÛL : AKSAK SEMAİ

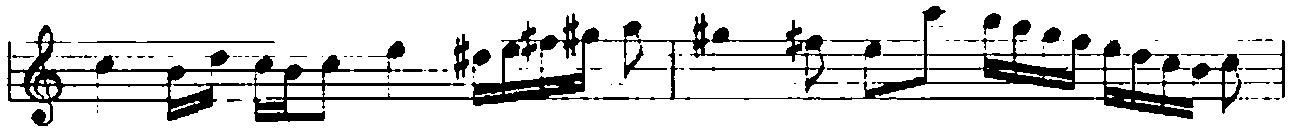
BESTE : KÜÇÜK MÜEZZİNBAŞI



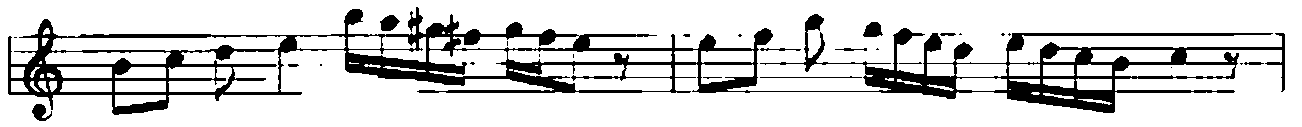
Ah Ki kim se yi di dil



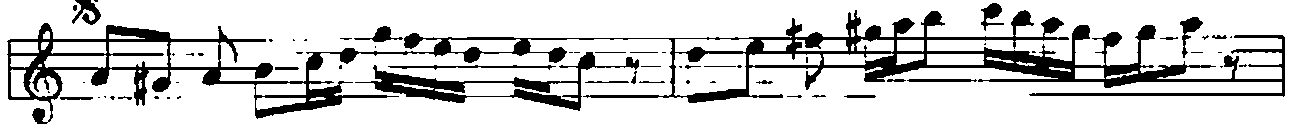
ten ki a zar



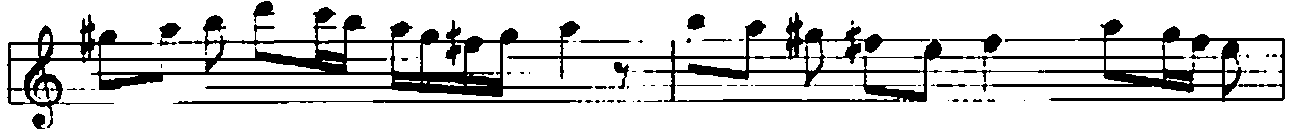
i it me sul tan



lık bu dur bu dur



Ta na dir dir te ne nen ni te ne nen



düm de rel la dir dir len ter dil li



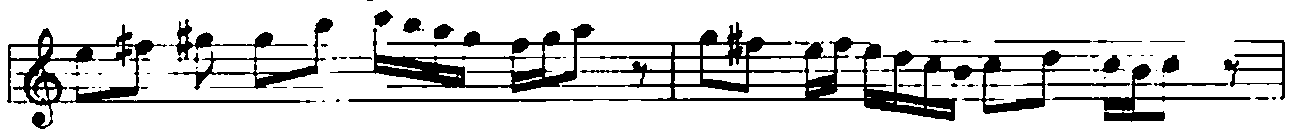
ter dil li ten dil li ten der de re dil li



de re dil li ney vay SON



Ah Ger ger çl her bir



der de var dir

bir ta bi bi
ça re ça re saz

Kimseyi dil tenki âzâr itme sultanlık budur
Kalb-i nur-ı tahtıgâh eyle süleymanlık budur
Gerçi her bir derde vardır bir tabibi çâre saz
Feyz gir-i kalbi mahzun ol ki lokmanlık budur

Tana dir dir te ne nen ni te ne nen düm de rel la
dir ter ter dil li ter dil li ter det de re dil ll de re dil ll ney vay