

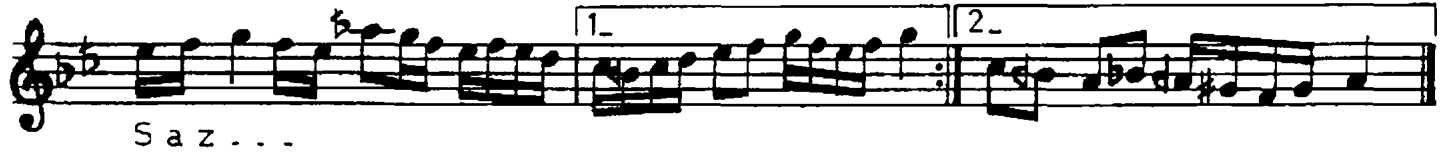
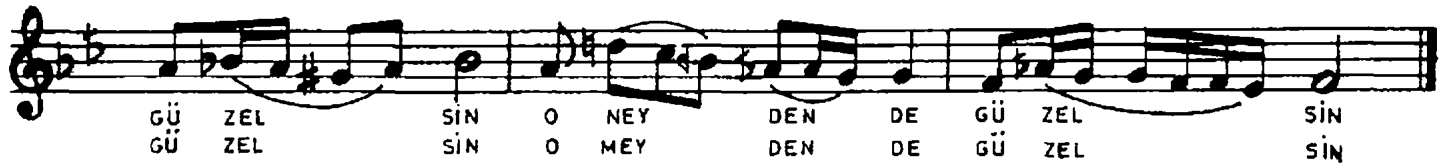
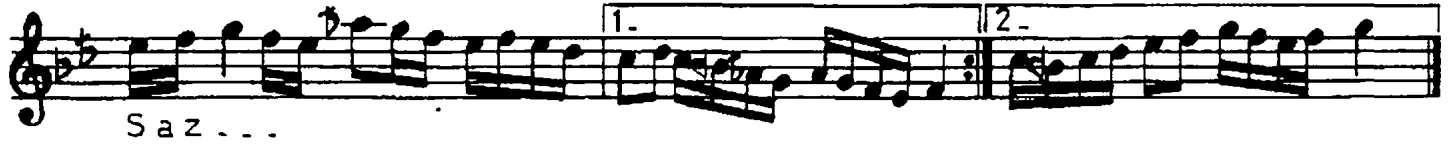
ŞEVK-EFZA ŞARKI

SÖZ VE BESTE
BURHAN DURUCU

DÜYEK

RUHUMA FASLI SABÂ NAKŞEDİYOR GÖZLERİN

: 108



19.1.1988

RUHUMA FASLI SABÂ NAKŞEDİYOR GÖZLERİN
HÜZZAMLA FERYAD EDEN O NEYDEN DE GÜZELSİN
AKLIMA DÜŞSEN BİR AN MEST EDİYOR SÖZLERİN
KADEHLERDE RAKS EDEN O MEYDEN DE GÜZELSİN