

ŞEVK-EFZÂ NAKİŞ YÜRÜK SEMÂİ

Ser-i zülf-i anberini yüzüne nikâb edersin

BESTE: HAMMAMİZADE
ISMÂİL DEDE EFENDİ

USÛL: YÜRÜK SEMÂİ



Ah Se ri zül fi an be ri ni se ri zül



fi an be ri ni yü zü ne



ni kab e der sin a câ nim gel



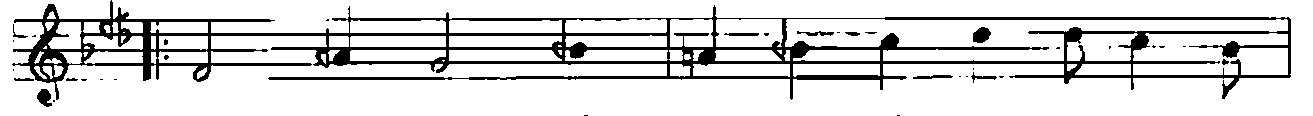
Ah Be ni böy le has re tin
Ah E le rağ be ti nü vâ



le be ni böy le has re tin le ş ci ğe nim
ziş e le rağ be ti nü vâ ziş ku lu na



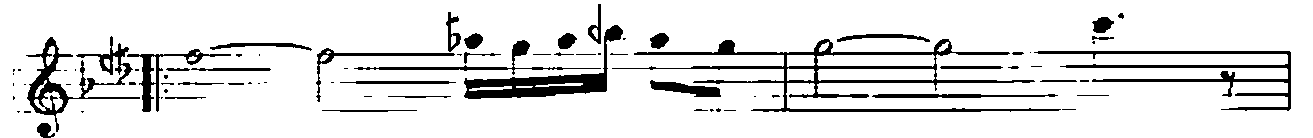
ke bab e der sin vay
i tab e der sin vay



ten ni ten ni ten nen ni te nen



nâ te ne dir ney ney (saz ...)



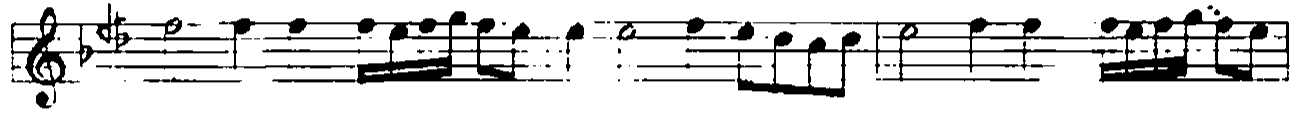
yâr dost yâr dost



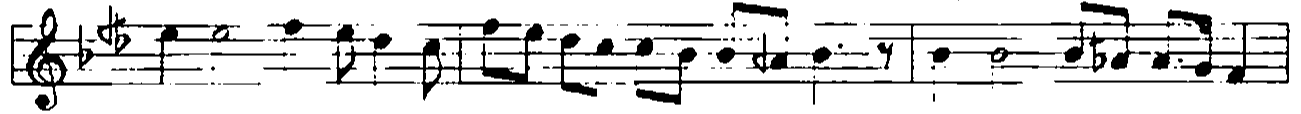
dil de ni hâ nim
kâ ş i ke mâ nim



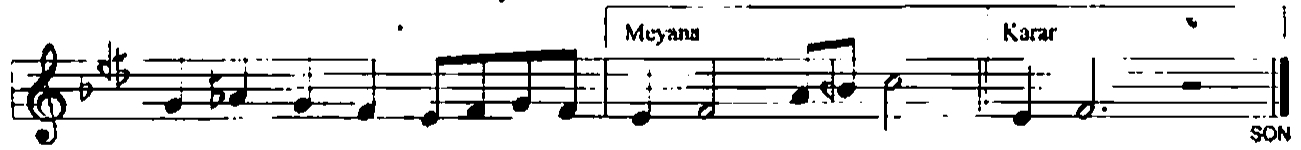
ah ah rû hî re vâ nîm



Ah Be ni böy le has re tin le be ni böy
Ah E le rağ be ti nû vâ ziş e le rağ

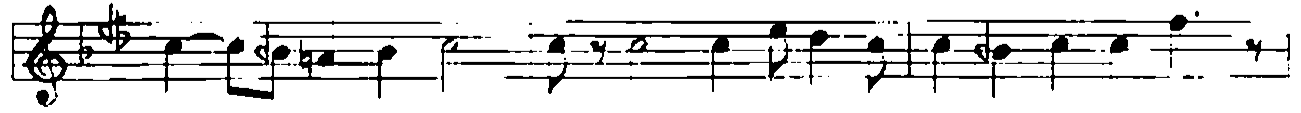


le has re tin le ci ğe rim ke bab e der
be ti nû vâ ziş ku lu na i tab e der



sin sin vay vay

Meyan



Ah Ne se nin gi bi gû zel var ne se nin



gi bi gû zel var ne be nim gi bi ce fâ



keş a câ nîm gel

Ser-i zülf-i anberini yüzüne nikâb edersin
Beni böyle hasretinle ciğerim kebab edersin
Ne senin gibi güzel var ne benim gibi cefâkeş
Ele rağbet-ü nevâziş kuluna itâb edersin

Terennüm:

Ten ni ten ni ten nen ni ten nâ te ne dir ney
yâr yâr dilde nihânım ah ah rûh-l revânım