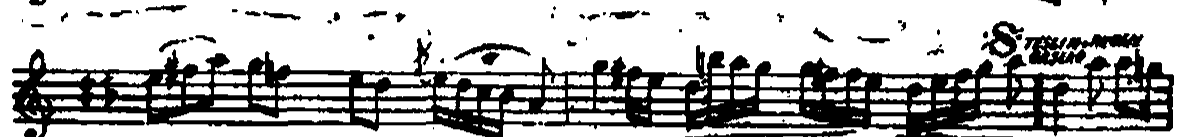
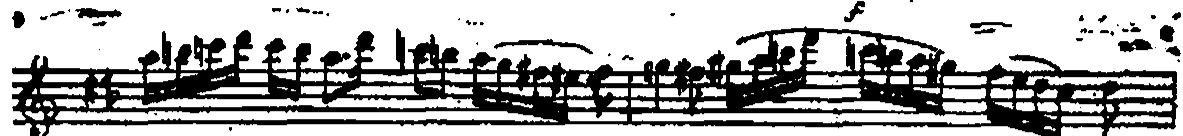
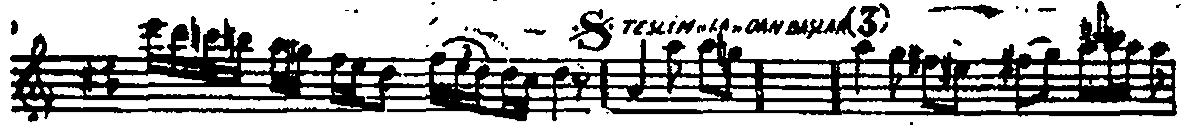
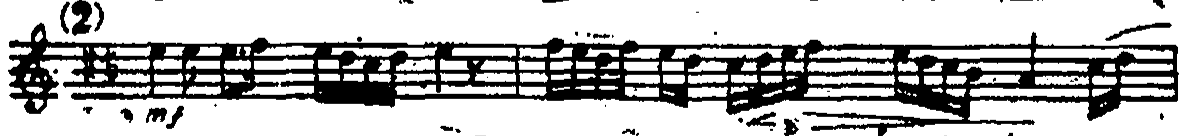
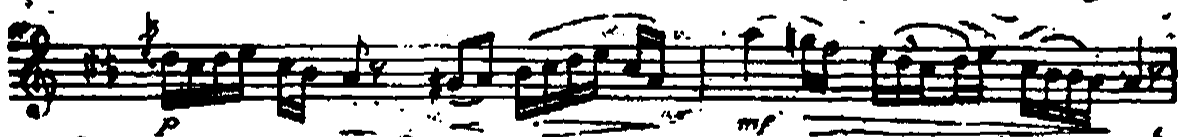
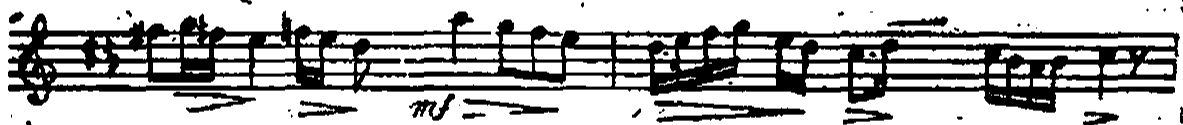
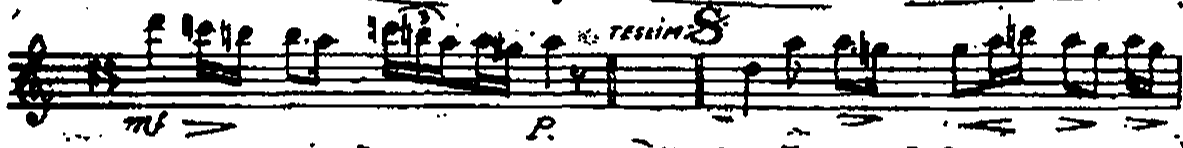
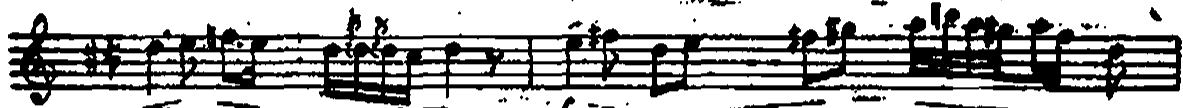
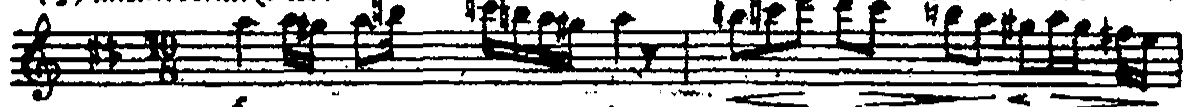


SEHNAZ SAZ SEMÂİ

MÜHÜR HAZRETİNE KAMUSU

(1) ANSAK SEMÂİ (♩=120)



(4) YÜRÜK SEMÂİ (♩=120)

TESLİM OLMA - ÇAN BAŞLA (3)

TESLİM OLMA - ÇAN BAŞLA

A handwritten musical score consisting of seven staves of music. The notation includes treble clefs, various note values (quarter, eighth, and sixteenth notes), rests, and dynamic markings. The first staff begins with a treble clef and a key signature of one flat. The music is written in a fluid, handwritten style. Dynamic markings include *mf* on the fourth staff, *TEHLIN* on the sixth staff, and *p* at the end of the seventh staff. The score is presented on a white background with black ink.