

ŞİVENÜMA SAZ SEMÂİSİ

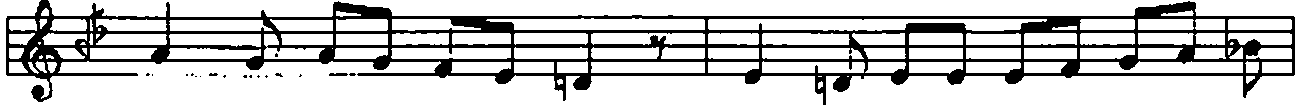
USÛL: AKSAK SEMÂİ

BESTE : NEYZEN EMİN DEDE

BİRİNCİ HANE



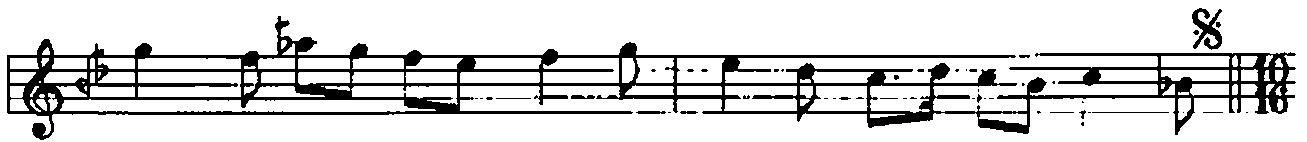
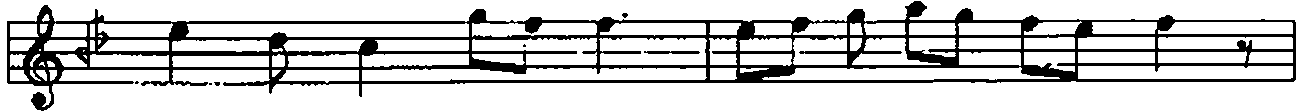
MÜLAZEME %



İKİNCİ HANE



ÜÇÜNCÜ HANE



DÖRDÜNCÜ HANE

The image shows a single staff of musical notation for the fourth line (Dördüncü Hane). The staff is written in treble clef with a key signature of one flat (B-flat). The notation consists of a sequence of notes and rests across four measures. The first measure begins with a double bar line and contains a whole note G4. The second measure contains a quarter note A4, a quarter note B-flat4, and a quarter rest. The third measure contains a quarter note C5, a quarter note B-flat4, and a quarter rest. The fourth measure contains a quarter note A4, a quarter note G4, and a quarter rest. The piece concludes with a double bar line and a fermata symbol.