

TAHİR SAZ SEMÂİSİ

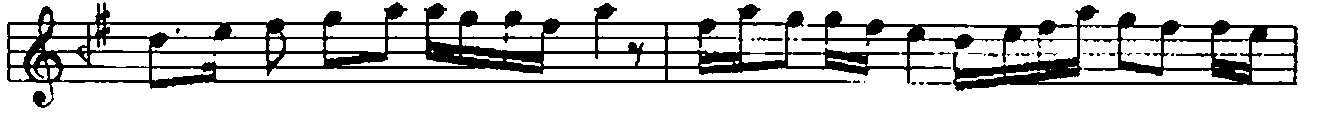
USUL: AKSAK SEMÂİ

BESTE: H. SADETTİN AREL

1.HANE



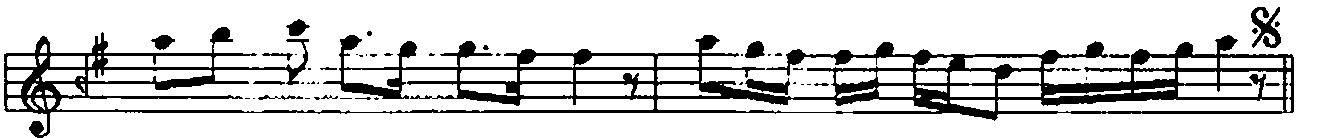
MÜLAZİME §



2.HANE



3.HANE



4.HANE

Musical score for '4.HANE' in treble clef, 1/8 time signature, key of D major. The score consists of four staves of music. The first staff begins with a treble clef, a key signature of one sharp (F#), and a time signature of 1/8. The melody features eighth notes, some beamed together, and rests. The second staff continues the melody with similar rhythmic patterns. The third staff shows a continuation with some beamed eighth notes. The fourth staff concludes the piece with a double bar line and a repeat sign (two dots and a vertical line).