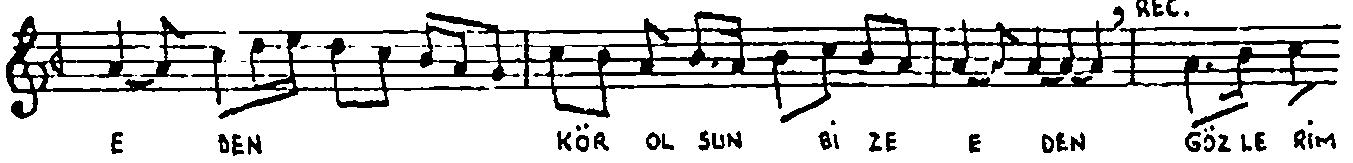
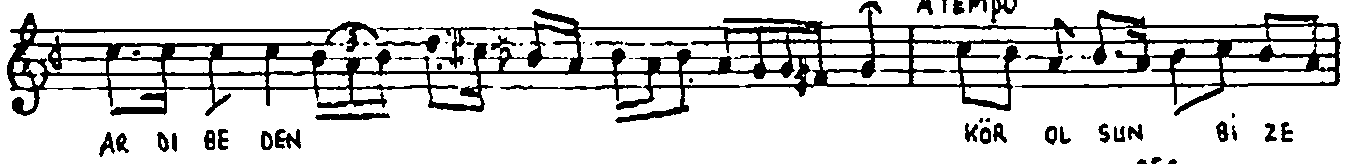
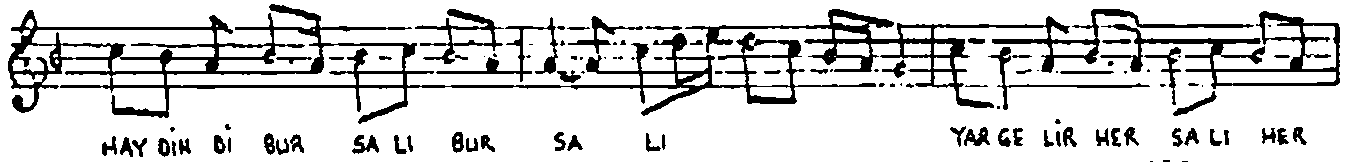
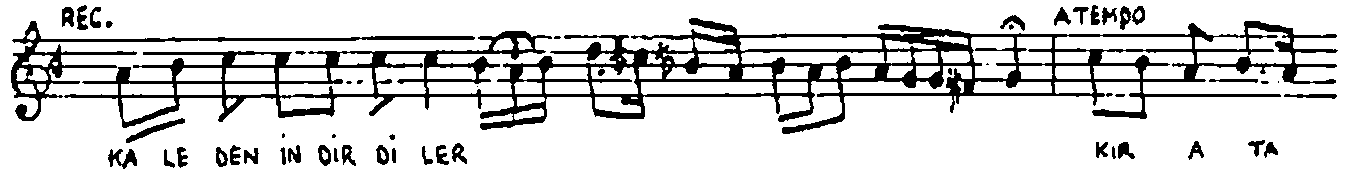
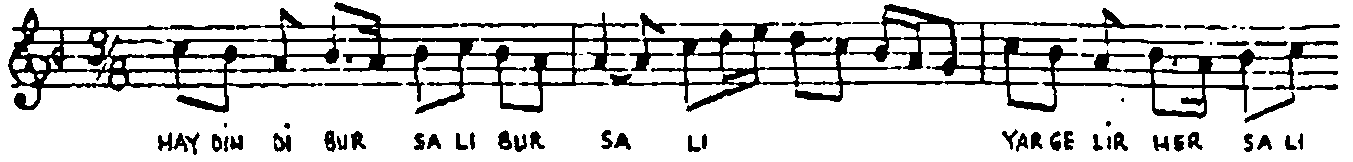


LİSSAK TÜRKÜ  
(KALENİN İNDİRİLERİ) \*BURSALI,  
HAYDINDI BURSA'LI

OYNAK

♩:216



Aytaç EROBEN

♩ ATEMPO

YOL DA KAL DI NE GE LEN VAR NE  
 GI DEN NE GE LEN VAR NE GI DEN HAY DİN DI  
 BUR SA LI BUR SA LI YAR GE LİR HER SA LI HER SA  
 LI YAR GE LİR HER SA LI HER SA LI  
 YAR GE LİR HER SA LI HER SA LI

FERİT SİDAL PLAKTAN NOTASINI YAZMIŞTIR.

Aytaç ERGEN

HAYDINDI BURSALI BURSALI  
 YAR GELİR HER SALI HER SALI  
 KALEDEN İNDİRDİLER  
 KIR ATA BINDIRDİLER

ÜÇ GÜNLÜK GÜVEY İKEN  
 FİZANA (YEMENE) GÖNDERDİLER  
 HAYDINDI BURSALI BURSALI  
 YAR GELİR HER SALI HER SALI

KALENİN ARDI BİDEN  
 KÖR OLSUN BİZE EDEN  
 GÖZLERİM YOLDA KALDI  
 NE GELEN VAR NE GİDEN

HAYDINDI BURSALI BURSALI  
 YAR GELİR HER SALI HER SALI