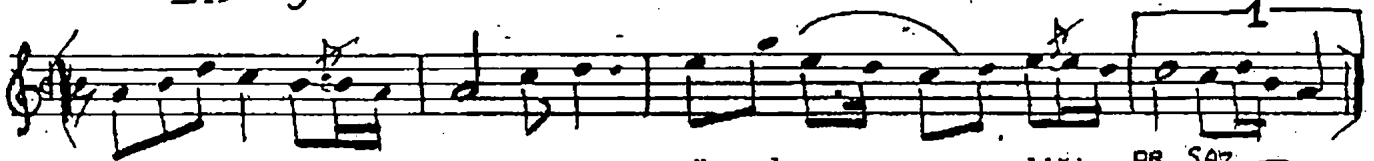
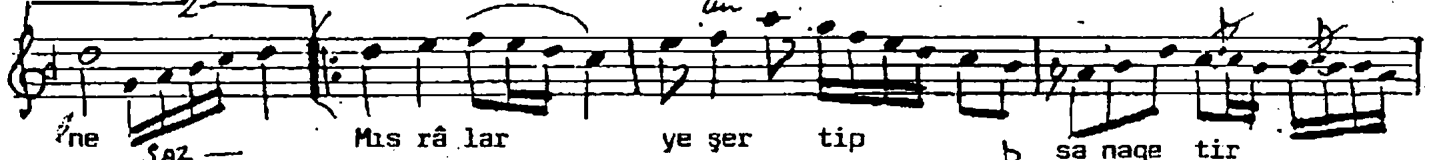


- Aranağmesi -



Bes te ler den ta şan gü zel liği BE SAZ



ne SAZ Mıs râ lar ye şer tip sa nage tir



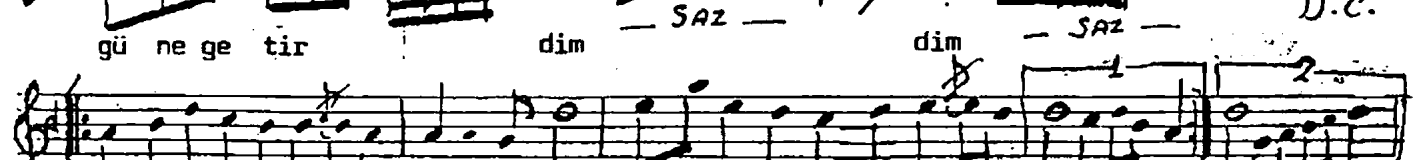
dim SAZ dim SAZ Sen hep şarkı lar da gülüm se yi



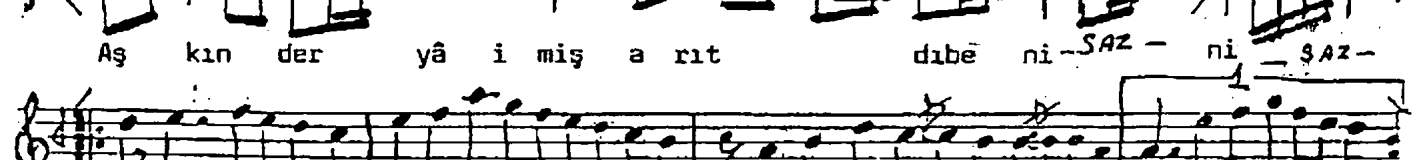
ne SAZ ne SAZ Gönlü mü aşk de nen



gü ne ge tir dim SAZ dim SAZ D.C.



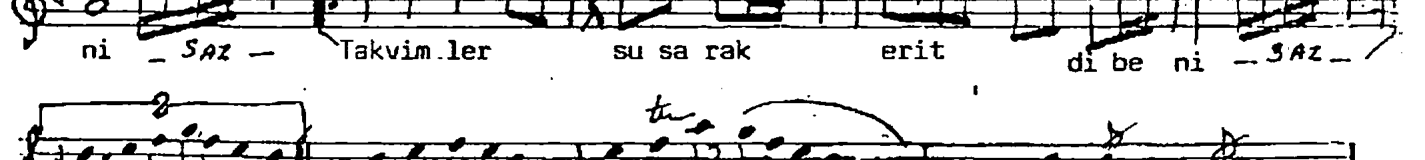
Aş kın der yâ i miş a rıt dibē ni SAZ ni SAZ



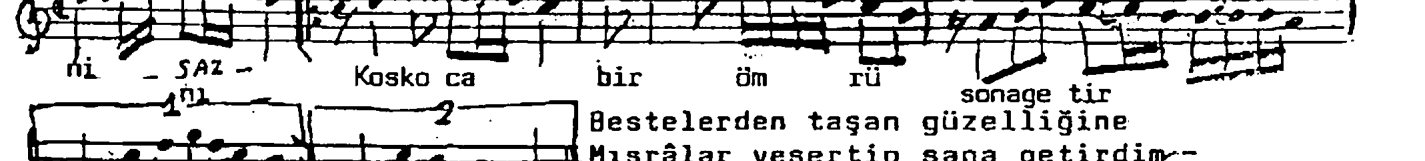
A lev ler üs tün de yü rüt tü be ni SAZ



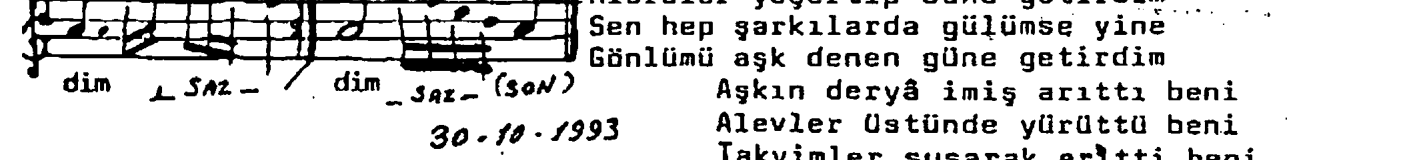
ni SAZ Takvim ler su sa rak erit di be ni SAZ



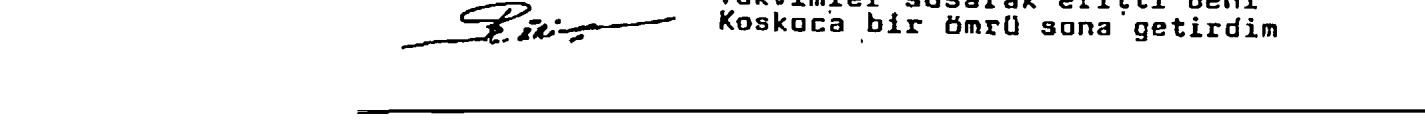
ni SAZ Kosko ca bir öm rü sona ge tir



Bestelerden taşan güzelliğine Mıs râlar yeşertip sana getirdim



Sen hep şarkılarda gülümse yine Gönlümü aşk denen güne getirdim

Aşkın deryâ imiş arıttı beni  
Alevler üstünde yürüttü beni  
Takvimler susarak eritti beni  
Koskoca bir ömrü sona getirdim

30.10.1993

P. İ. İ.