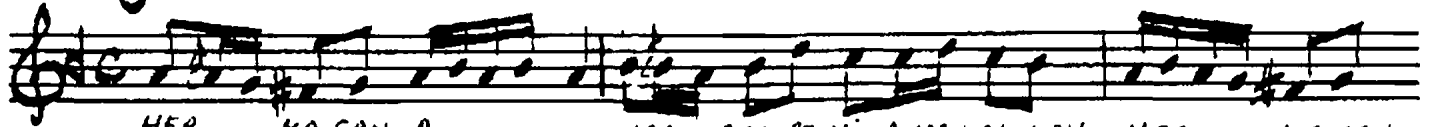


Usûlü: Sofyan

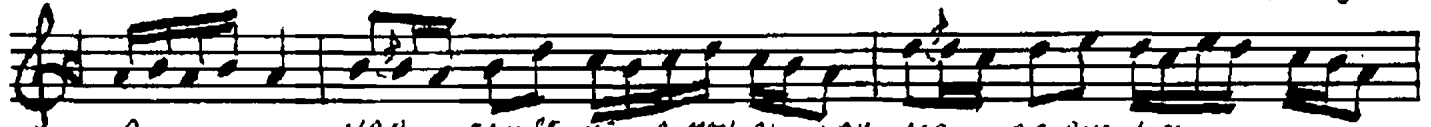
Beste = ?

Güfte = YUNUS EMRE

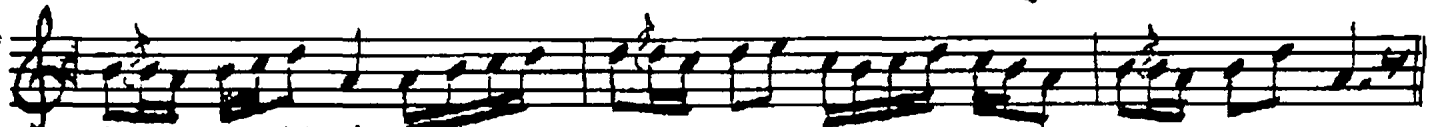
# USSAK İLÂHİ-



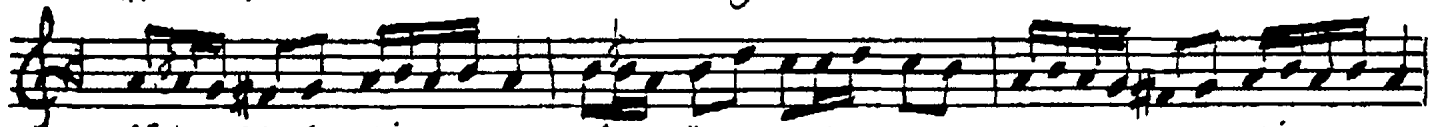
HER KA ÇAN\_A . . . . . NAR SAM SE NI A MAN AL LAH HER KA ÇAN\_  
SEN SİN İS Mi . . . . . BÂ KI U LAN " " " " SEN SİN İS  
ZAR - O LUR\_A - . . . . . Sİ KİN İ Şİ " " " " ZAR - O LUR\_  
A ŞIK YU NUS . . . . . SE Nİ İS TER " " " " A ŞIK YU



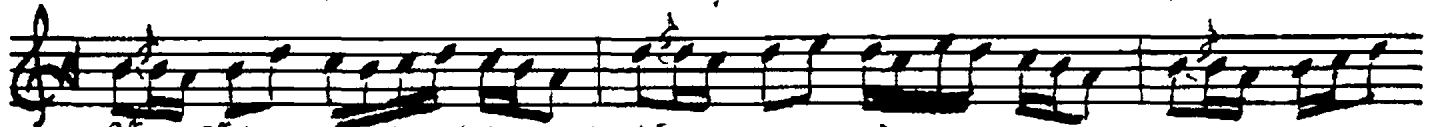
A . . . . . NAR SAM SE NI A MAN AL LAH KA RA RİM KAL . . . . .  
Mi . . . . . BÂ KI O LAN " " " " SEN SİN DİL LER . . . . .  
A . . . . . Şİ KİN İ Şİ " " " " DUR MA ZA KAR . . . . .  
NUS . . . . . SE Nİ İS TER " " " " LÜT FEY LE CE . . . . .



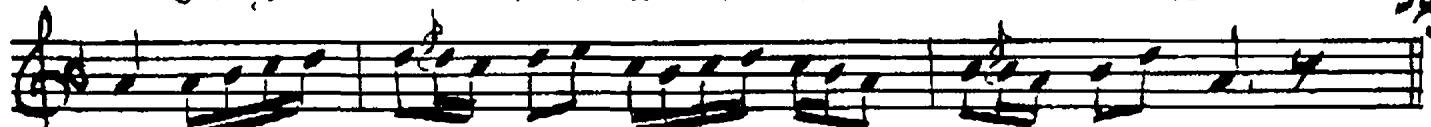
MAZ AL LA HİM AH . . . . . KA RA RİM KAL . . . . . MAZ AL LA HİM  
DE O KU NAN " SEN SİN DİL LER . . . . . DE O KU NAN  
GÖ ZÜ YA Şİ " DUR MA ZA KAR . . . . . GÖ ZÜ YA Şİ  
MA LİN GÖ S TER " LÜT FEY LE CE . . . . . MA LİN GÖ S TER



SEN DEN GAY RI . . . . . GÖ ZÜ M YA Ş İ N A MAN AL LAH SEN DEN GAY RI . . . . .  
SE NİN AŞ RI . . . . . NA DO KU NAN " " " " SE NİN AŞ RI . . . . .  
SEN DEN AY RI . . . . . DÜ Ş EN Kİ Şİ " " " " SEN DEN AY RI . . . . .  
CE MÂ LİN GÖ . . . . . REN\_Â Ş İ K LAR " " " " CE MÂ LİN GÖ . . . . .



GÖ ZÜ M YA Ş İ N A MAN AL LAH KİM SE LER SİL . . . . . MEZ AL LA  
NA DO KU NAN " " " " KEN Dİ Nİ BİL . . . . . MEZ AL LA  
DÜ Ş EN Kİ Şİ " " " " Dİ DÂ RI GÖ R . . . . . MEZ AL LA  
REN\_Â Ş İ K LAR " " " " E BE Dİ Ö L . . . . . MEZ AL LA



HİM AH . . . . . KİM SE LER SİL . . . . . MEZ AL LA HİM  
HİM " KEN Dİ Nİ BİL . . . . . MEZ AL LA HİM  
HİM " Dİ DÂ RI GÖ R . . . . . MEZ AL LA HİM  
HİM " E BE Dİ Ö L . . . . . MEZ AL LA HİM

Güfte için = Teşke Sîri Ant. Shf 42

B. Toprak - v. Emre dîvânı Shf 371

Gülzar - v. Hıfsof Shf - 9

Maerî; Kit - v. Emre dîvânı Shf 88

Hisar - " " " Shf 171

Pir Sultan Abdal "Sütun Sîrleri" kitabım-  
dan aldım. Vahit Dede derlemesi Nefes  
Şiye Kayıtlı. 4.3.1989

Emrah Kosa