

Uşak Şarkı

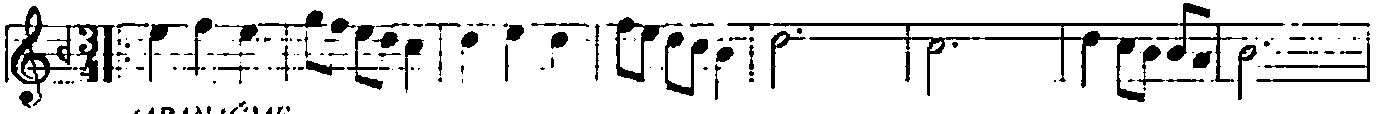
Yalançı

Beste: HASAN ESEN

Güfte: FATMA ONUR

♩ = 140

Semai



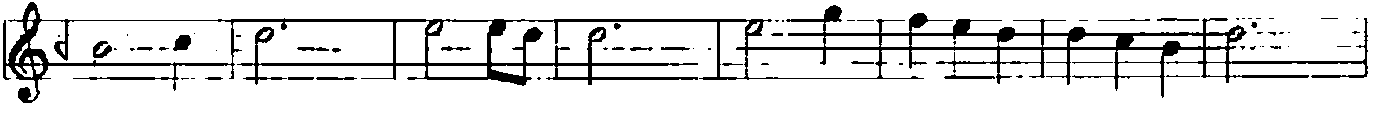
(ARINAGME....)



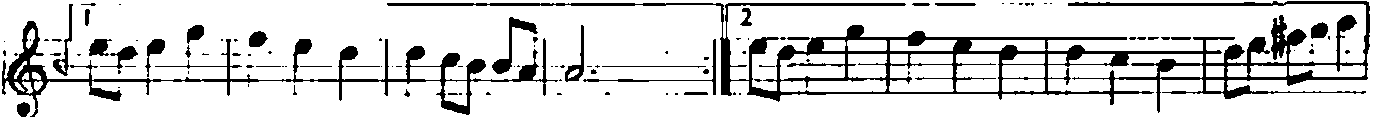
.....)



Om rü mü ver di ğim ve fu sız yıl lar



is mi ni stiy le yen fal lar ya lan cı

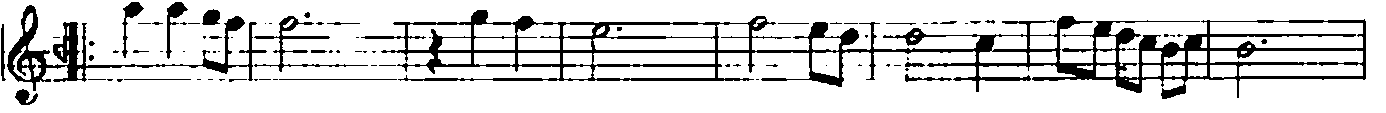


(SAZ....

.....)

(SAZ....

.....)



Ge lir sin di ye rek hak tı ğım yol lar



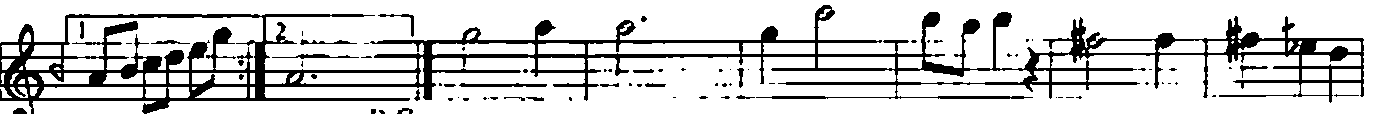
boy nu ma sa rı lan kol lur ya lan cı



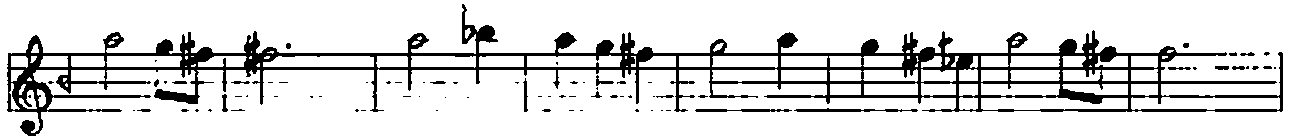
cı ya lan cı ya lan cı kol lar ya lan



cı ya lan cı ya lan cı kol lar ya lan



cı ^{D.C} cı (SON) Kir pi ğin u cum da tit re yen



yaş lar bağ rı ma bas ı ğın taş lar



ya lan cı (SAZ.....) (.....)

ÖMRÜMÜ VERDİĞİM VEFASIZ YILLAR
ADINI SÖYLEYEN FALLAR YALANCI
GELİRSİN DİYEREK BAKTIĞIM YOLLAR
BOYNUMA SARILAN KOLLR YALANCI

KIRPIĞIN UCUNDA TITREYEN YAŞLAR
BAĞRIMA BASTIĞIM TAŞLAR YALANCI
GELİRSİN DİYEREK BAKTIĞIM YOLLAR
BOYNUMA SARILAN KOLLAR YALANCI

FATMA ONUR