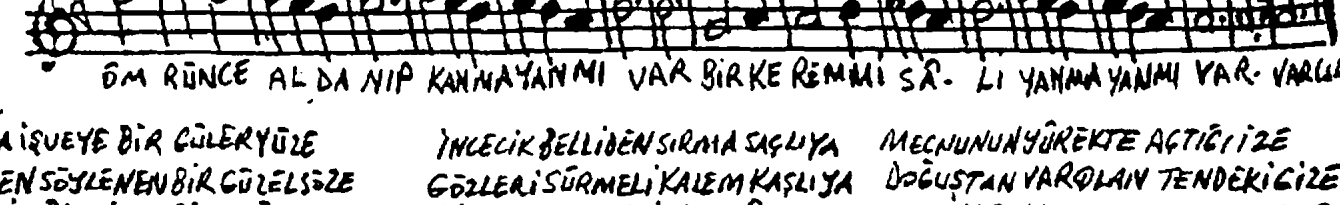
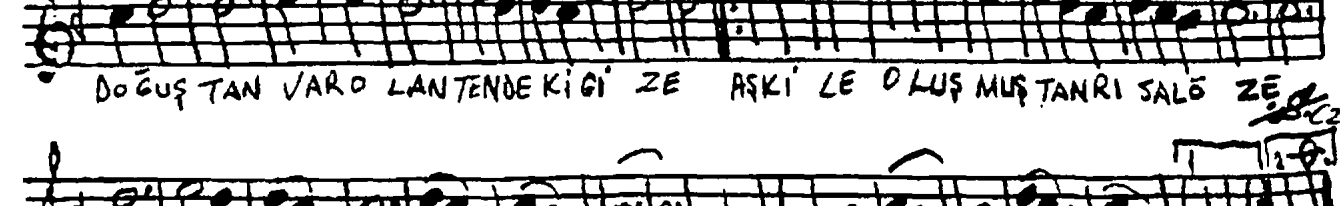
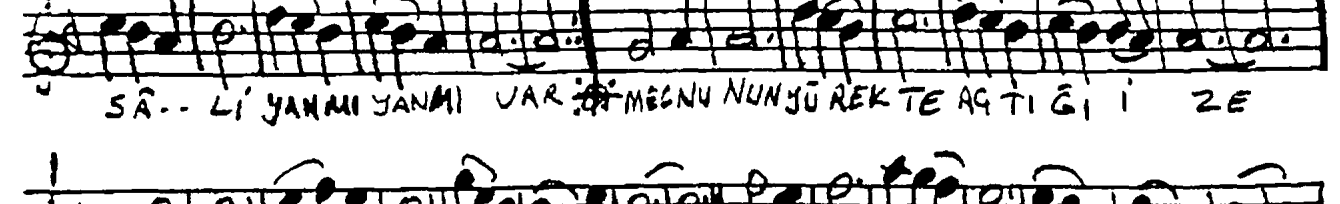
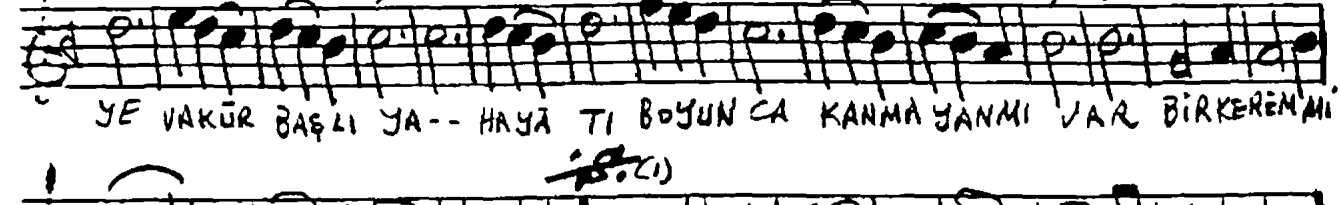
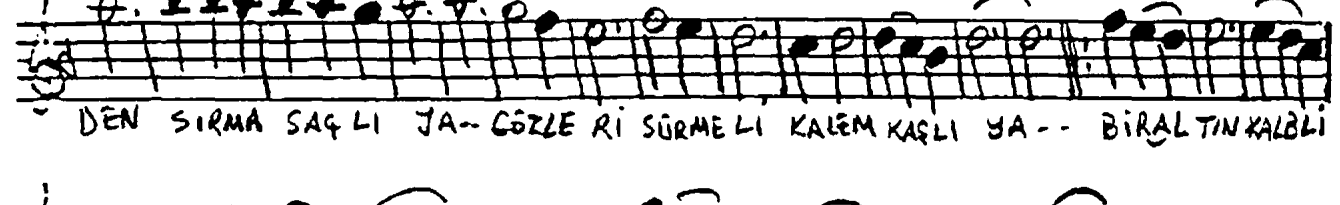
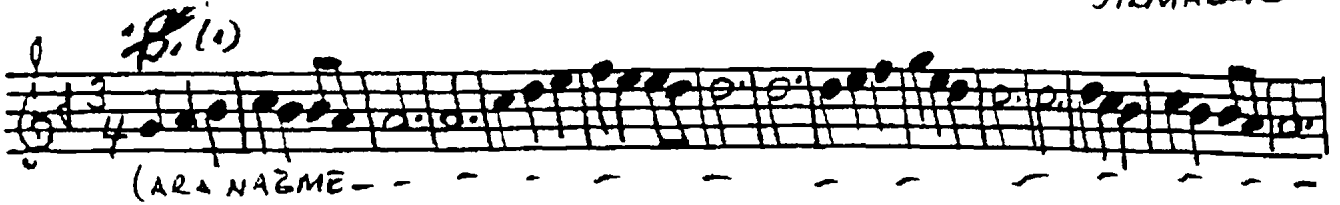


Uşak : Uşak

UŞAK ŞARKI  
(BİR NAZA İŞVEYE BİR GÜLERYÜZE)

Güfte: İLHAN SAN  
Beste: MUSTAFA ÜNAL  
TILMAZER

♩ : 168



BİR NAZA İŞVEYE BİR GÜLERYÜZE  
GÖNÜLDEN SÖYLENEN BİR GÜZELSÖZE  
BİR YEŞİL BİR SİYAH BİR ELÂ GÖZE  
ÖM RÜNCE ALDANIP KANMAYANMI VAR  
BİR KEREMMİ SÂ Lİ YANMAYANMI VAR

İNCE CİK BELLİ DEN SİRMA SAĞ LI YA  
GÖZLERİ SÜRME Lİ KALEM KAŞ LI YA  
BİR ALTIN KALBLİ YE VAKÜR BAŞ LI YA  
HAYÂ TI BOYUN CA KANMAYANMI VAR  
BİR KEREMMİ SÂ Lİ YANMAYANMI VAR

MECNUNUN YÜ REK TE AĞ TI Ğ İ ZE  
DOĞ UŞ TAN VAR O LANTENDE Kİ Ğ İ ZE  
AŞ KI LE O LUŞ MUŞ TAN RI SAL Ö ZE  
ÖM RÜNCE ALDANIP KANMAYANMI VAR  
BİR KEREMMİ SÂ Lİ YANMAYANMI VAR