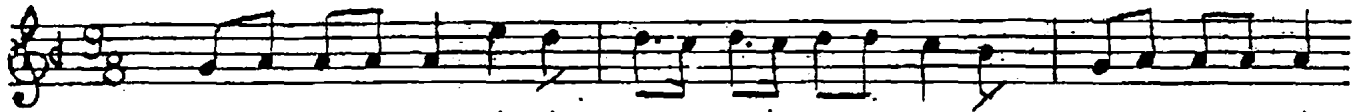


♩ = 224 AKSAK

UŞSAK TÜRKÜ ARABAMIN İSBİTİ



A RA BA MIN İS Bİ Tİ DEH DEH DEH A MAN DA A RA BA MIN İS



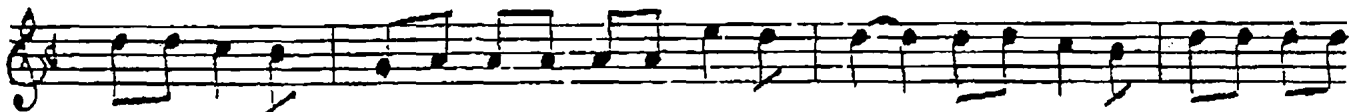
Bİ Tİ DEH DEH A MAN DA DO LA ŞA LIM KEP Sİ Tİ DEH DEH A



MAN DA YIL MAZ MAH MU DUM GEL GEL A MAN DA AS LAN



MAH MU DUM GEL A RA BA MIN MAR OAK BA ŞI DEH DEH



DEH A MAN DA A RA BA MIN MAR OAK BA ŞI DEH DEH A MAN DA SE Lİ ME NİN



ÇA TIK KA ŞI DEH DEH A MAN DA YIL MAZ MAH MU DUM GEL



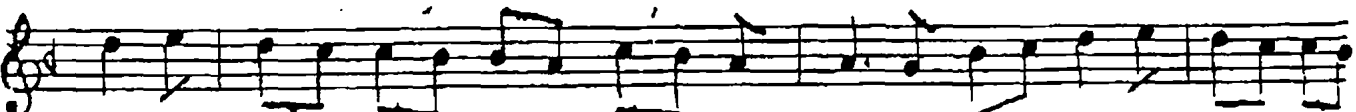
GEL A MAN DA AS LAN MAH MU DUM GEL



A RA BA MIN KA NAT LA RI DEH DEH DEH A MAN DA A RA BA MIN KA NAT



LA RI DEH DEH A MAN DA SE Lİ ME NİN YA NAK LA RI DEH DEH A



MAN DA YIL MAZ MAH MU DUM GEL GEL A MAN DA AS LAN



MAH MU DUM GEL

ARABAMIN İSBİTİ "DEH DEH AHANDA"
1. DO LA ŞALIM KEPSİTİ
YILMAZ MAHMUDUM "GEL GEL AHANDA"
ASLAN MAHMUDUM GEL

ARABAMIN MAR OAK BAŞI "DEH DEH AHANDA"
2. SELİMENİN ÇATIK KAŞI
YILMAZ MAHMUDUM "GEL GEL AHANDA"
ASLAN MAHMUDUM GEL

ARABAMIN KANATLARI DEH DEH AHANDA"
3. SELİMENİN YANAKLARI
YILMAZ MAHMUDUM "GEL GEL AHANDA"
ASLAN MAHMUDUM GEL