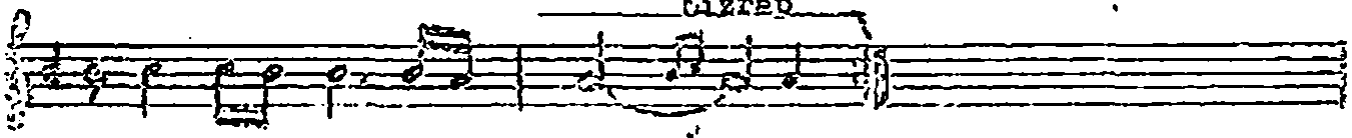


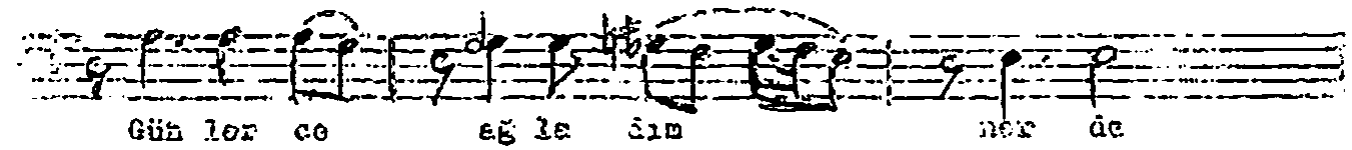
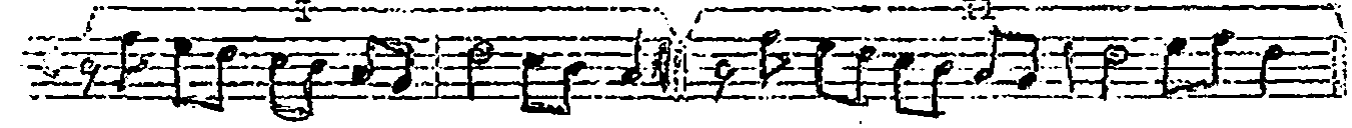
Saz - Giriş



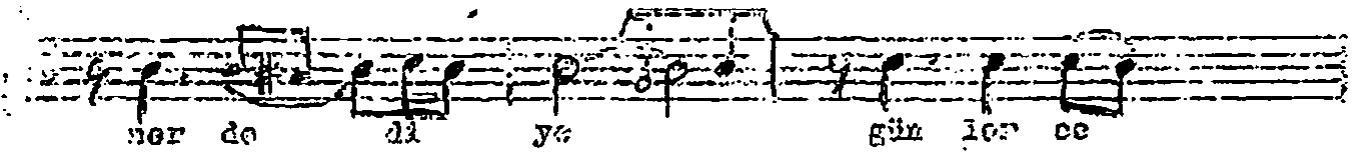
Git tin be ri bi ra kıp a cı lar la yi



ne a cı lar la yi ne



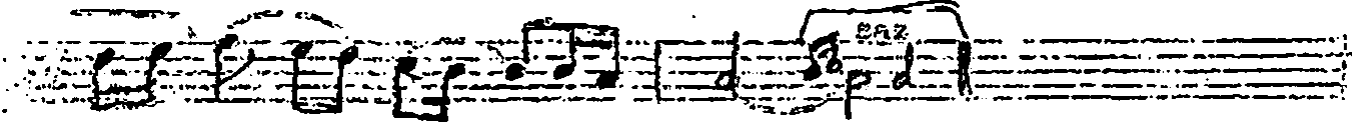
Gün lor ce ağ la dım ner de



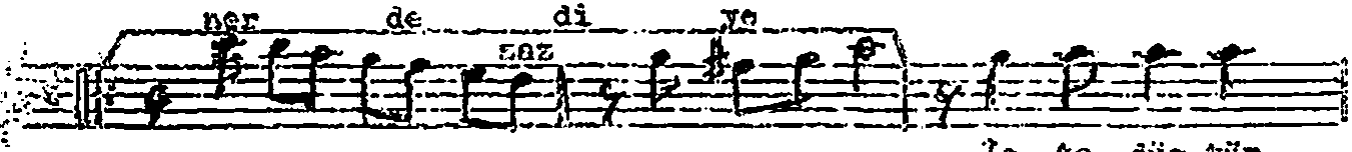
ner de di ye gün lor ce



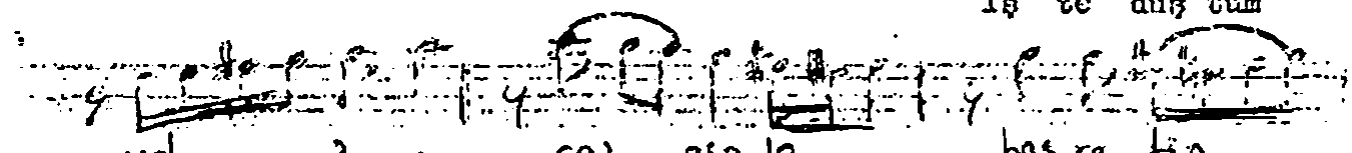
ağ la dım ner de



ner de di ye



İş te düğ tüm



Yol Pa ra saş gin le has re tin

le sev gin le haere tin

le le

A ri yo rum ye şil ba kış ılım ner de

ner de di ye a ri yo rum

ye şil ba kış ılım ner de

ner de di ye (Son)

Gittin beni bırakıp acılarıyla yine
 Günlerce ağladın nerde,nerde diye
 İşte düştüm yollara sevginle hasretinle
 Arıyorum yeşil bakışlım nerde diye.

M. BİRTAN