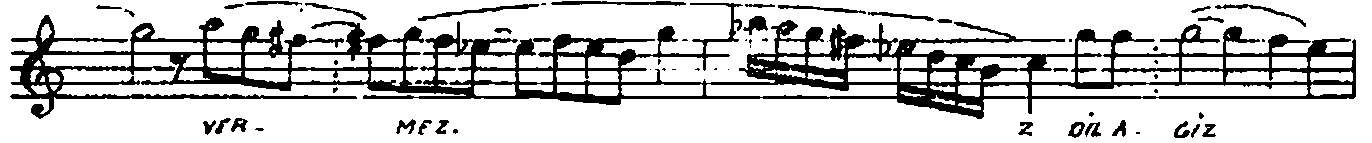
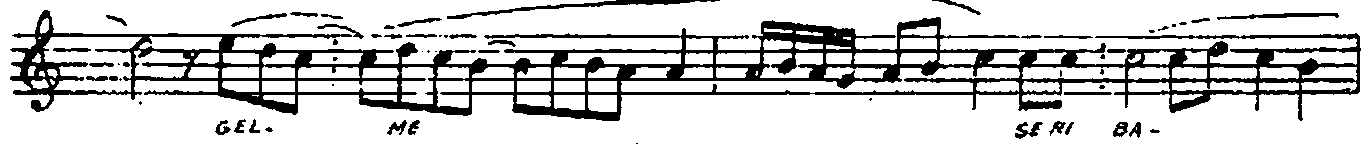
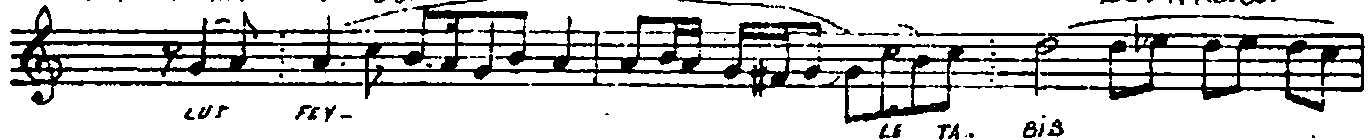


UŞSAK SARKI
LUTFEYLE TABİB

AGIRCA AKSAK (♩=88)

SEVKİ M.:

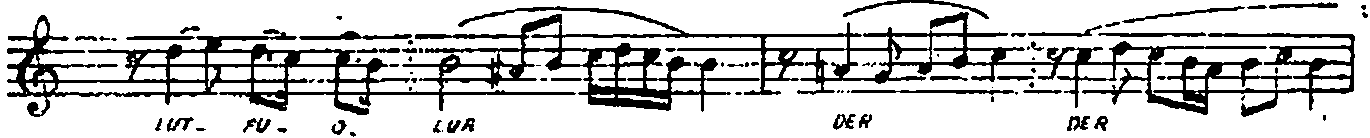




AKSAK (♩=120)



AĞIRCA ANSAK (♩=88)



-KODA-



LUTFUYLA TABİB DİNLEME KALBİM DENİM ÖYE
GELME SER-İ BÂLİNİME İZME BENİ BÖYLE
VERMEZ DİL AĞIZ HASTA DİLİM YARELİ SÖYLE
BİL DİRDİMİDE ÖYLE MÜDÂVÂTINI SÖYLE
ÇEK BENDEN ELİN ARZ EDEYİM YAREMİ YÂRE
BELKİ NİGE-Hİ LUTFU OLUR DİRDİME ÇÂRE