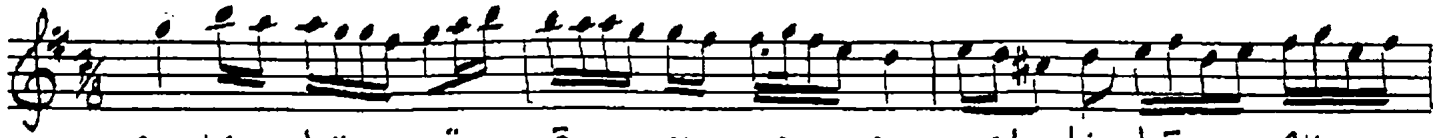


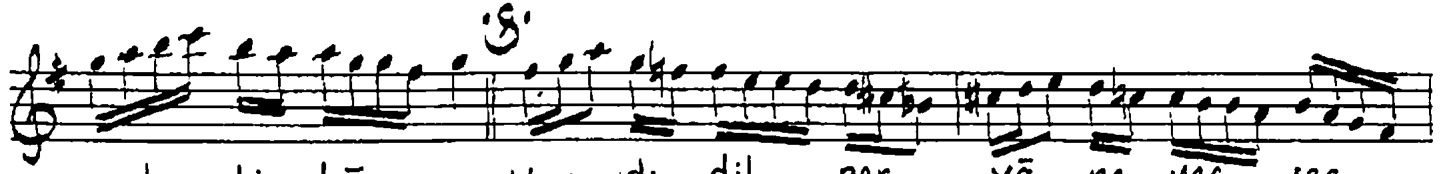
ZAVIL SARKI

Usûl: DWA Hindî

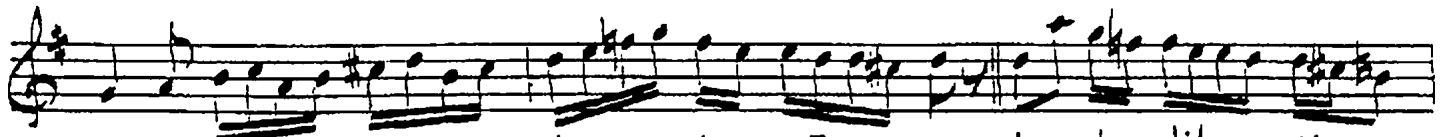
Hacı Fâik Bey



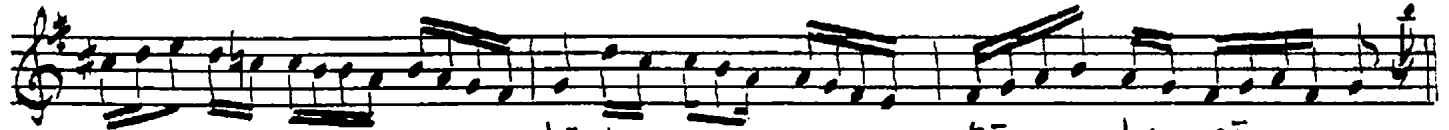
Şem'i hüs nü ā nı na ey meh li kā ey



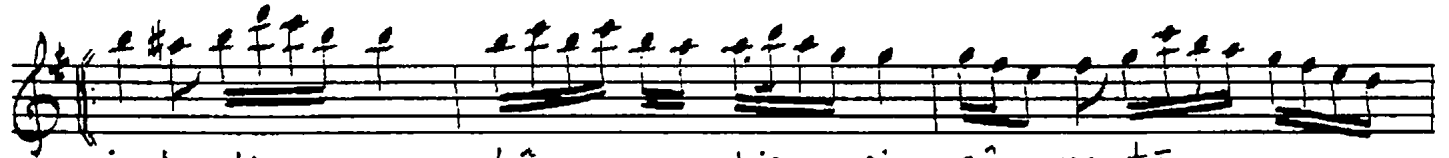
meh li kā Yan dı dil per vā ne ves ser
Mer he mi vas Lin la cā nā



tā be pā ser tā be pā Yan dı dil per
kil de vā kil de vā Mer he mi vas



vā ne ves ser tā be pā ser tā be pā
Lin la cā nā kil de vā kil de vā



İş le di pey kā nı hic rin cā na tā



cā na tā

Şem-i hüsnü ānına ey mehlikā
Yandı dil pervâne-ves ser-tā-be-pā
İşledi peykân-ı hicrin cāna tā
Merhem-i vaslınla cānā kil devā

Sendedir divâne gönlüm sendedir
Cism ü āmalim seninle zindedir
Dil sana kurbān cān efgendedir
Merhem-i vaslınla cānā kil devā

Df-193/344

Muallim İsmail Hakkı Beyin TRT. deki
kolleksiyonundan yazıldı. Güfte tamamlandı.

Ünver Kosal