

# UŞŞAK İLÂHÎ

Güftesi : Yunus Emre'nin

Bestesi : kimin olduğu meçhuldür

Düyek (♩=120) 8/8 i \_ \_ \_ l la \_ l la \_ h hu \_ \_ hu hu



lâ \_ \_ \_ i \_ \_ lâ \_ \_ he \_ \_ i \_ l la \_ l la \_ h (SON)



i \_ \_ \_ l la \_ l la \_ h hu \_ \_ hu hu



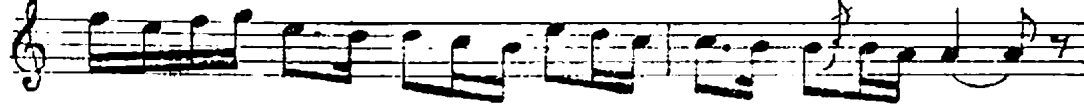
ta \_ \_ ş di \_ ra \_ h me \_ t de \_ r ya \_ \_ sı \_ \_ \_



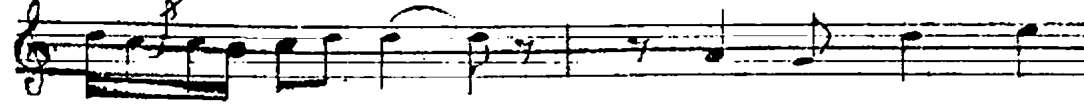
i \_ \_ \_ l la \_ l la \_ h hu \_ \_ hu hu



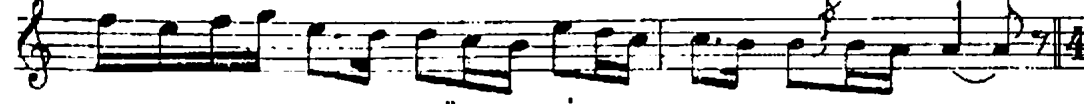
lâ \_ \_ \_ i \_ \_ lâ \_ \_ he \_ \_ i \_ l la \_ l la \_ h



i \_ \_ \_ l la \_ l la \_ h hu \_ \_ hu hu



dö \_ \_ rt ki ta \_ \_ bı \_ n ma \_ na \_ sı \_ \_ 8/8



## GÜFTESİ

Taşdı rahmet deryası garkoldu cümle âsı  
Dört kitabın manüsü tâilâhe illallah.