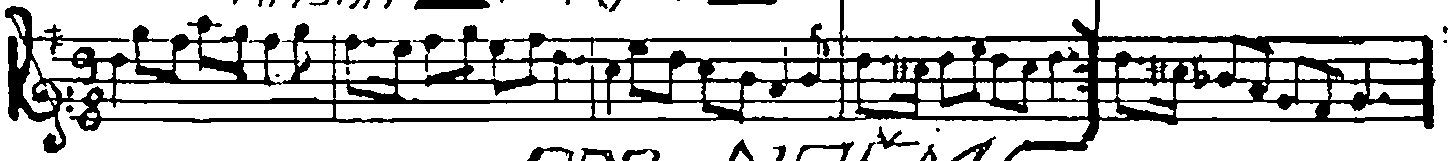


BUFTE = BÜNDÜDÜ  
BESTE = DOĞAN

♩ = 68

YÜRÜK  
AKŞAK

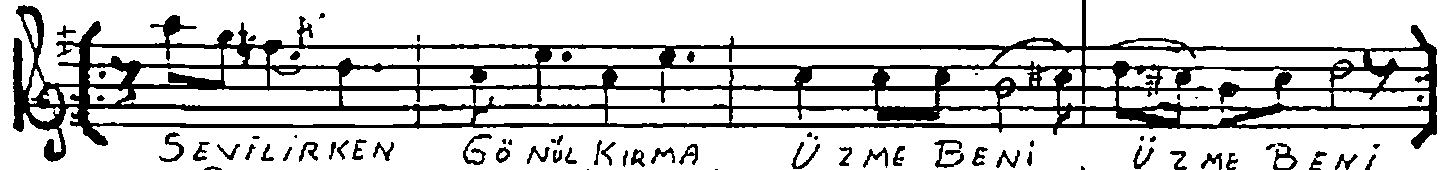
ZAVİL



ARA NAĞME



KAŞYA PARKEN, GÖZ ÇIKARMA, DİNLE BENİ, DİNLE BENİ



SEVİLİRKEN GÖNÜL KIRMA, ÜZME BENİ, ÜZME BENİ

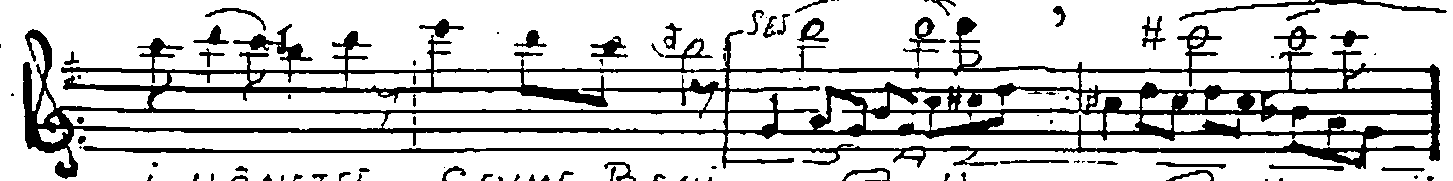
2

TEMPO = ♩ - 50



ÜZME BENİ

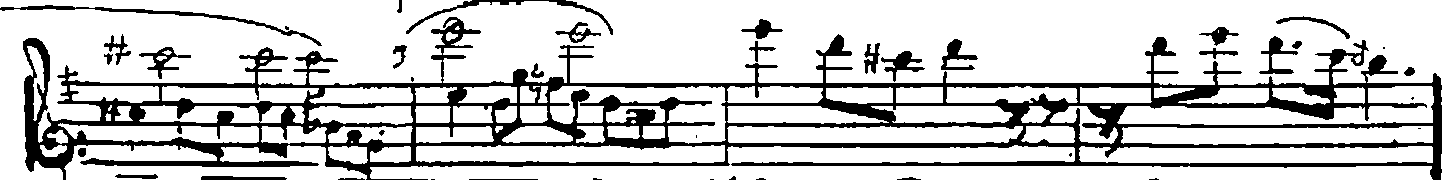
SENİN AŞKIN



İ HÂNETSE, SEVME BENİ

A..H..

A..H..



A..H.. SEVME BENİ

SENİN AŞKIN



İ HÂNETSE

SEVME BENİ

SEVME BENİ

SON PİSMANLIK



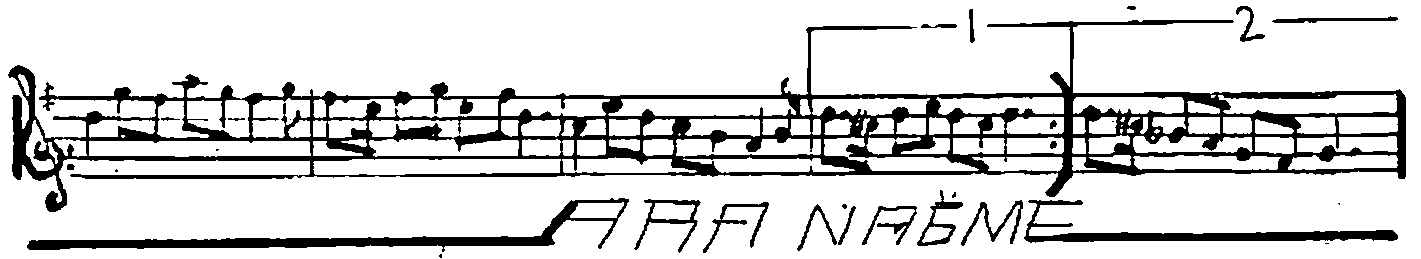
FAYDA ETMEZ.

ÖZLE BENİ

ÖZLE BENİ

ÖZLE BENİ.

GÜNDOĞDU DOĞAN



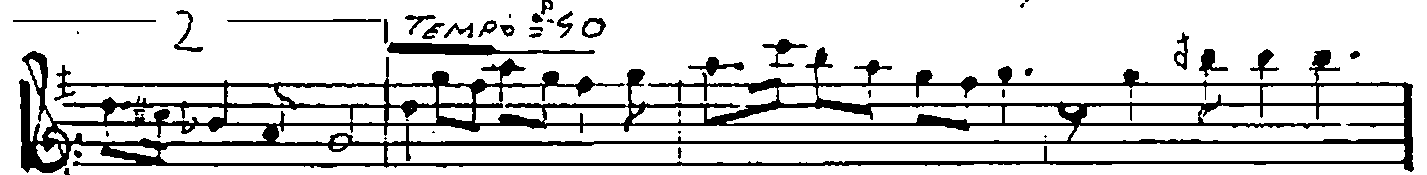
AAA NAEME



BÜZELİNDE BÜZELİ VAR. BÖR KENDİNİ BÖR KENDİNİ,

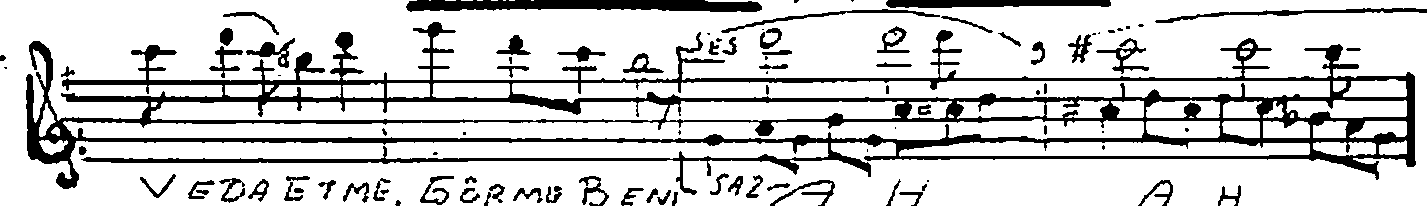


FAZLA NAZLA U SANDIRMA. BİL HALİNİ , BİL HALİNİ



BİL HALİNİ.

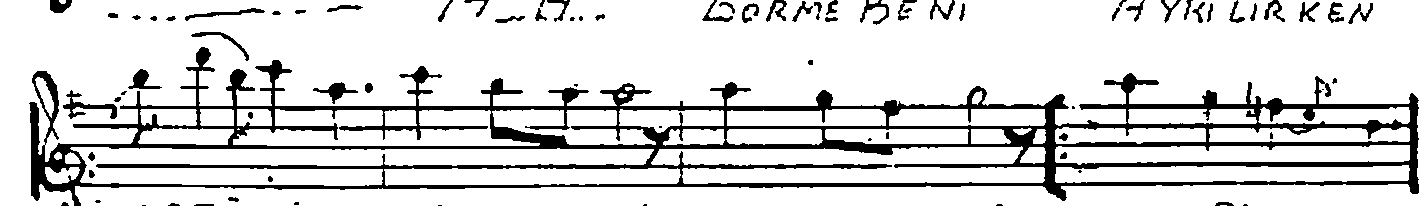
AYRILIRKEN



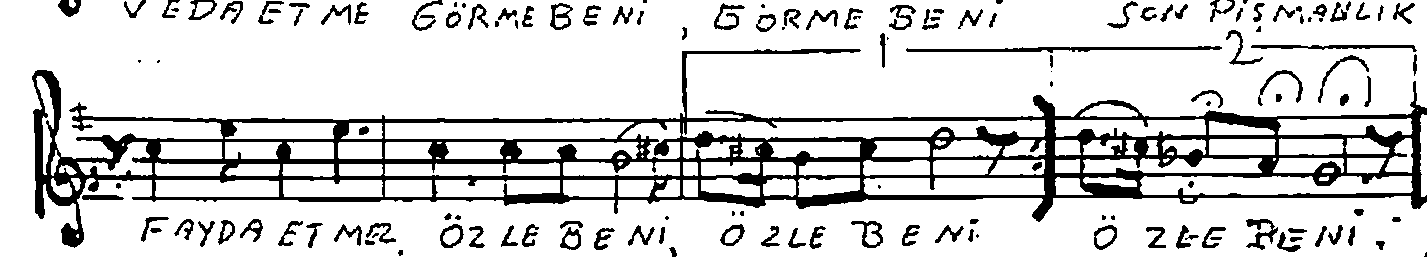
VEDA ETME. GÖRME BENİ SAZ-A-H A-H .....



A-H.. GÖRME BENİ AYRILIRKEN



VEDA ETME GÖRME BENİ , GÖRME BENİ SON PİŞMANLIK



FAYDA ETMEZ. ÖZLE BENİ, ÖZLE BENİ ÖZLE BENİ.

SON.