

# YEGÂH ŞARKI

Bir kerre nigâh eyle

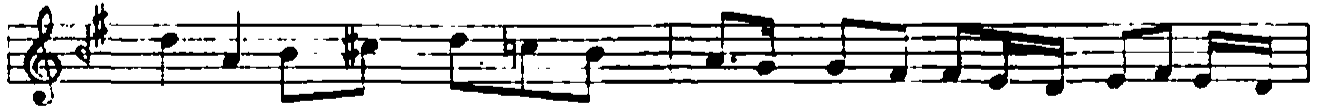
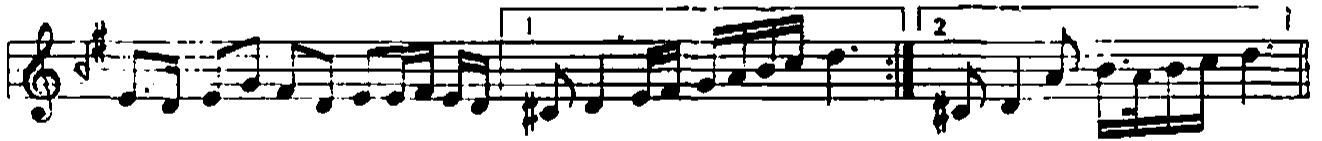
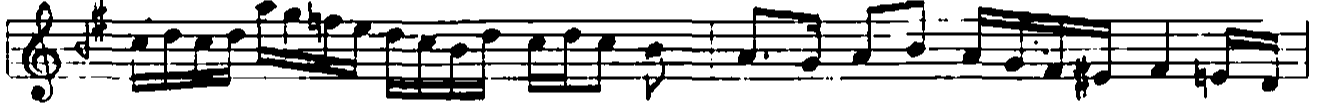
Güfte ve Beste :  
Osman Nuri Özpekel

Usûlü: Aksak

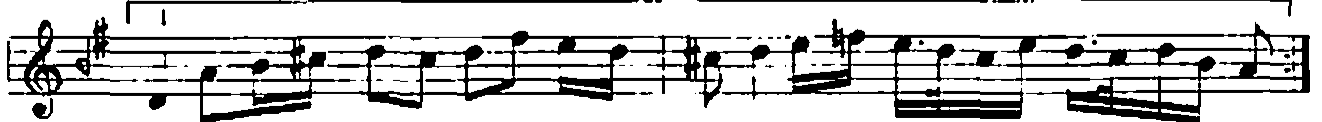
( ♩ = 116 )



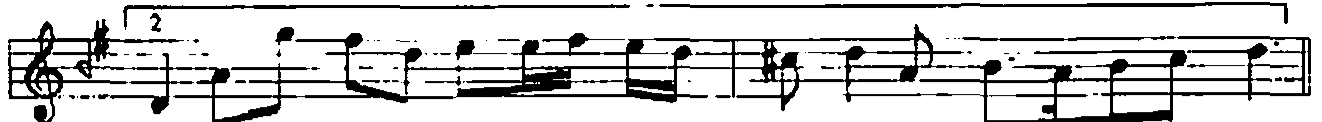
## ARANAĞMESİ



Bir ker re ni gâh ey le gö nül çeş



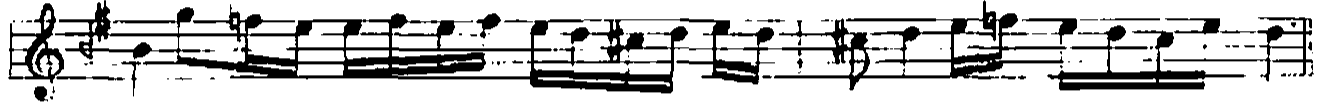
mi ne kan sin SAZ



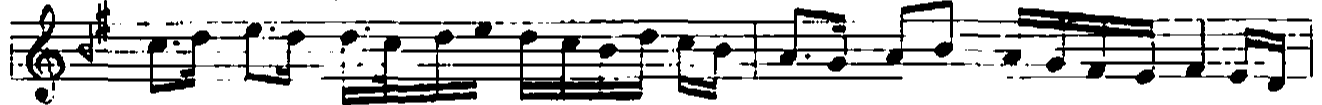
mi ne kan sin SAZ



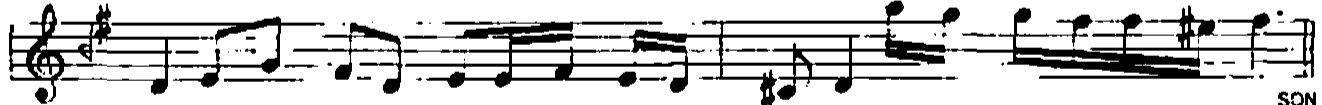
Â Has teş reî do lu söz rak ler rü le ko nuş bah  
hu bu rü ya



tı na yan yan sin sin SAZ



Â Has teş reî do lu söz rak ler rü le ko nuş bah  
hu mu rü ya



tı na yan yan sin sin SAZ SON

Yegâh şarkı ( 2 )

Şef kât le sa ran si ne de, ef sù  
nu na râm et ----- SAZ -----  
Şef kât le sa ran si ne de ef sù  
nu na râm et ----- SAZ ----- ON O

BİR KERRE NİGÂH EYLE GÖNÜL ÇEŞMİNE KANSIN  
ÂTEŞ DOLU SÖZİLERİLE KONUŞ BAHİTİNA YANSIN  
ŞEFKATLE SARAN SİNEDE EFSÜNUNA RÂM ET  
HASRETTE BIRAK RÜHU BU RÜ'YÂDAN UYANSIN